



Pluto – NWS Interconnector Pipeline Project  
Cultural Heritage Management Plan

Version	Date	Description	Approved
A	26-Oct-18	Draft – Issued for internal review	Neil Parry
1	11-Dec-18	Issued for use	Neil Parry

---

## Contents

<b>1</b>	<b>Project Overview</b> .....	<b>3</b>
<b>2</b>	<b>Terminology and Abbreviations</b> .....	<b>5</b>
<b>3</b>	<b>Stakeholder Engagement</b> .....	<b>6</b>
3.1	Aboriginal groups affected by the Project.....	6
3.2	Native Title and cultural heritage .....	6
<b>4</b>	<b>Purpose of CHMP</b> .....	<b>7</b>
<b>5</b>	<b>Summary of Consultation and Fieldworks to date</b> .....	<b>8</b>
5.1	Archival research .....	8
5.2	Aboriginal Heritage Survey .....	8
<b>6</b>	<b>Heritage survey outcomes</b> .....	<b>9</b>
6.1	Summary of heritage finds .....	9
<b>7</b>	<b>Key Construction Hazards and proposed mitigation</b> .....	<b>11</b>
<b>8</b>	<b>Aboriginal Heritage Procedures / Control Methods</b> .....	<b>12</b>
8.1	Inductions and Cultural Heritage Awareness Training.....	12
8.2	Demarcation of Aboriginal Heritage Sites .....	12
8.3	Aboriginal Monitoring of ground disturbing works .....	12
8.4	Archaeological Salvage.....	13
8.5	Stop work - Aboriginal Heritage Incidents .....	13
8.6	Stop work – Identification of Aboriginal Sites .....	13
8.7	Stop work – Discovery of Skeletal remains .....	14
<b>9</b>	<b>Records</b> .....	<b>15</b>
<b>APPENDIX 1</b>	<b>- Detailed heritage site maps</b> .....	<b>16</b>
<b>APPENDIX 2</b>	<b>- Aboriginal Heritage Site Avoidance Survey Report of the Pluto North West Shelf Interconnector Pipeline Project, July 2018</b> .....	<b>20</b>

## 1 Project Overview

Australian Gas Infrastructure Group and DDG Operations Pty Ltd (AGIG) has been engaged by Woodside Burrup Pty Ltd (Woodside) to investigate and provide a front end engineering design proposal to design and construct the Pluto-NWS Interconnector Pipeline (PNI), a ~3.6km long, steel buried natural gas pipeline, connecting the Pluto LNG gas plant (Pluto LNG Plant) to the North West Shelf (NWS) Karratha Gas Plant (KGP) which is operated by Woodside on behalf of the NWS Project participants, located on the Burrup Peninsula in North Western Australia.

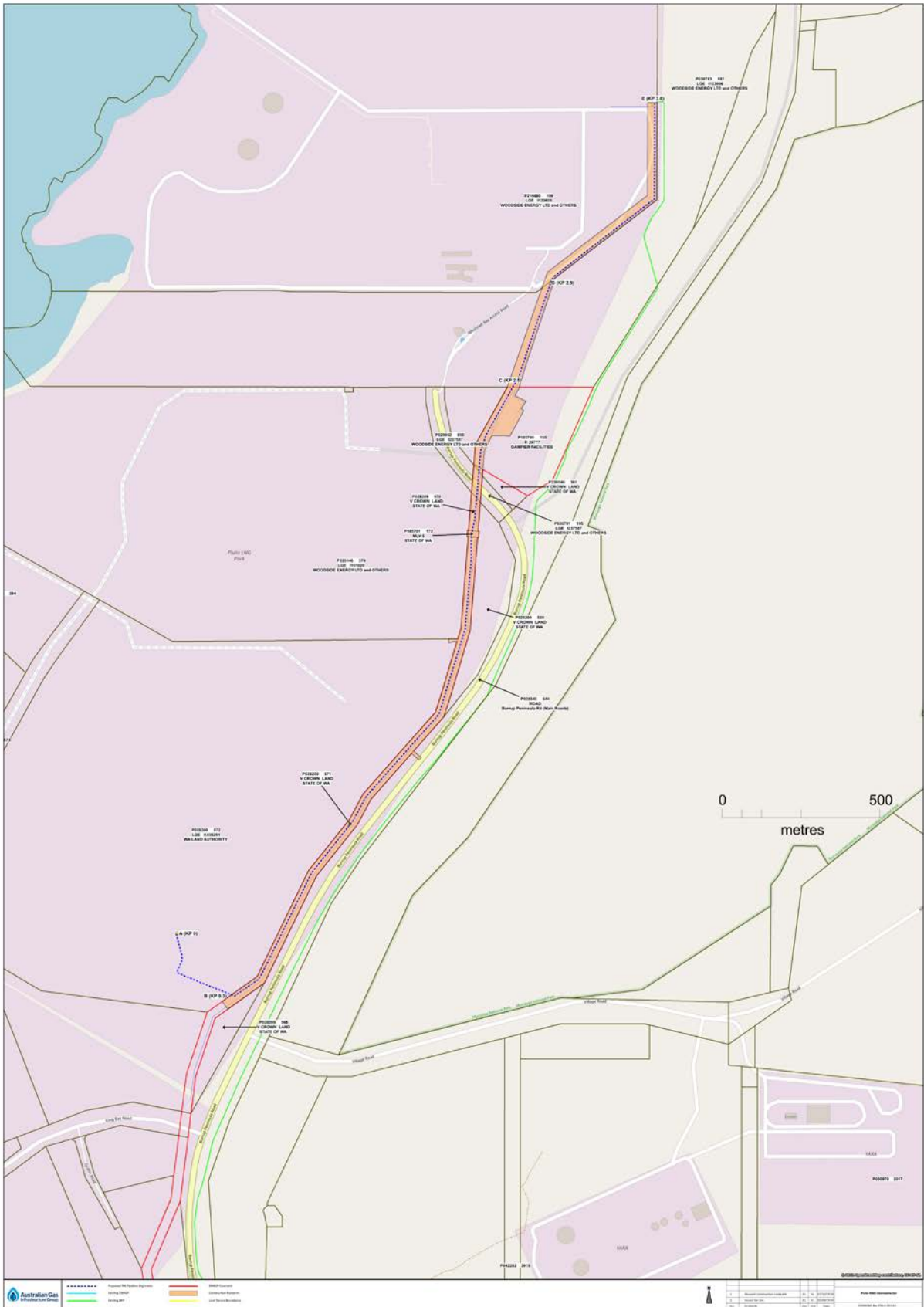
From the Pluto LNG Plant, the PNI will traverse the Dampier to Bunbury Natural Gas Pipeline (DBNGP) corridor and travel north for approximately 2.5km to the DBNGP Dampier facilities before traversing through the adjacent NWS buffer lease and then into the KGP (refer Figure 1).

The PNI will be constructed within a 30m wide construction right of way which will be located wholly within the existing DBNGP corridor, together with an area of approximately 0.6ha located within the existing DBNGP Dampier Facilities and two 10m wide tracks to facilitate access between the construction right of way and Burrup Road as shown in Figure 1 (PNI Corridor).

The proposed PNI has been designed to align with existing disturbed areas where possible and for the most part falls within the existing DBNGP corridor and located adjacent to the already operational DBNGP, or is otherwise located within the existing and developed areas within the KGP and adjacent buffer lease, thereby reducing the nature and scale of associated social and environmental impacts.

It is intended that developing the PNI to connect the Pluto LNG Plant and the KGP could fast-track the development of offshore gas reserves and leverage existing offshore capacities.

Figure 1: PNI Pipeline Route Overview



## 2 Terminology and Abbreviations

Table 1 lists the terminology and abbreviations used in this Cultural Heritage Management Plan (CHMP):

**Table 1: Terminology and Abbreviations**

Terminology or Abbreviation	Definition
CHMP	Cultural Heritage Management Plan (the Plan, this Plan)
ACMC	Aboriginal Cultural Materials Committee
AGIG	Australian Gas Infrastructure Group, DDG Operations Pty Ltd or such other related body corporate
AHA	The Aboriginal Heritage Act 1972 (WA) (the Act)
Contractor	Contractor, Sub-Contractor, supplier, site supplier, vendor, seller
DBNGP	Dampier-Bunbury Natural Gas Pipeline
DPLH	The Department of Planning, Lands and Heritage
Heritage Advisor	the person/s within AGIG (and subsidiary entities) responsible for overseeing the ground disturbing activities and Aboriginal monitoring
Heritage Site	an area identified to have cultural importance and significance to Aboriginal people
PNI	Pluto-NWS Interconnector Pipeline
PNI Corridor	The area within which the Project will be undertaken, as shown on Figure 1
Project	the planning, construction, operation and commissioning of the PNI
Project Personnel	Staff, Contractors, Subcontractors, vendors, suppliers, and visitors to the Project
Registrar	the person appointed under the <i>Aboriginal Heritage Act 1972</i> to administer the day to day operations of the ACMC along with perform other functions as allocated under the AHA
Section 18 Consent	the consent given by the Minister for Aboriginal Affairs to the owner of any land to use the land subject of a heritage site for a specific purpose
Site Supervisor	the person having responsibility for the supervision of on-ground activities from time to time (or their nominee)

## 3 Stakeholder Engagement

### 3.1 Aboriginal groups affected by the Project

The PNI pipeline affects land in which the following Aboriginal people have asserted Aboriginal Heritage knowledge:

- Ngarluma People
- Yindjibarndi People
- Yaburara & Mardudhunera People
- Wong- Goo-Tt-Oo People

As the key Aboriginal stakeholder groups for the Burrup Peninsula (Murujuga), each of these parties are signatories to the Burrup and Maitland Industrial Estates Agreement (BMIEA) Implementation Deed which was executed with the State of Western Australia in 2003.

In addition to the above Aboriginal groups, AGIG acknowledges the Murujuga Aboriginal Corporation (MAC) as the administrator for the implementation of the contractual obligations of the BMIEA. The parties that have been approached in relation to the Project are consistent with those which make up MAC; being the Ngarluma People, the Mardudhunera People, the Yaburara People, the Yindjibarndi People, and the Wong- Goo-Tt-Oo people.

The Burrup Peninsula includes areas of world-renowned heritage significance and the world's largest collection of rock art. Whilst the proposed PNI alignment falls in already disturbed areas, it is a highly sensitive and culturally rich area where industry and history collide, therefore broad consultation and engagement with Aboriginal stakeholders has been undertaken.

### 3.2 Native Title and cultural heritage

Native Title for the Pluto and NWS leases has been resolved through the BMIEA, as noted above.

AGIG has obtained external legal advice from Herbert Smith Freehills who have confirmed that pursuant to the Ngarluma/Yindjibarndi native title determination (WCD2005/001), native title does not exist in any area within the PNI Corridor.

From the cultural heritage perspective, AGIG is committed to ensure the following is upheld when developing the PNI:

- Open and flexible communication with the Aboriginal stakeholder groups;
- Consult with the Aboriginal stakeholder groups in relation to the management of identified Aboriginal heritage places;
- Endeavour to avoid identified Aboriginal sites where possible; and
- Fulfil its statutory obligations under the Aboriginal Heritage Act (1972).

## 4 Purpose of CHMP

The purpose of this Cultural Heritage Management Plan (CHMP) is to provide a document that outlines appropriate procedures to minimise the potential for any disturbance to existing and potentially unidentified Aboriginal (archaeological and ethnographic) sites during all phases of construction of the PNI.

This CHMP sets out the steps to be followed by AGIG, its contractors and all employees to identify and manage Aboriginal heritage values that may be affected by the Project in a manner that complies with relevant Legislation and the commitments made to the affected Aboriginal groups.

This CHMP has been developed based on the findings of a recent Aboriginal heritage survey and the associated consultation undertaken with the relevant Aboriginal stakeholder groups.

Table 2 sets out the objectives, performance indicators and targets for management of Aboriginal Heritage values associated with the PNI.

**Table 2: Objective and Management Targets**

Aboriginal Sites	Objectives	Performance Indicators / Targets
Recorded Aboriginal sites	To avoid disturbance to sites identified for protection within or near the PNI Corridor	No disturbance to sites
Unrecorded Aboriginal sites (in unlikely event they are discovered)	To manage new sites/cultural material uncovered or identified during construction of the Project in accordance with the Aboriginal Heritage Act 1972	All sites managed in accordance with the Aboriginal Heritage Act 1972

## 5 Summary of Consultation and Fieldworks to date

AGIG have appointed Horizon Heritage Management (Horizon Heritage) to facilitate an Aboriginal heritage survey over the PNI Corridor. This included archival research, archaeological and ethnographic field assessments and consultation with the Aboriginal stakeholders. Refer to Table 3 for full list of the significant consultations held to date.

### 5.1 Archival research

A review of the Department of Planning, Lands and Heritage (DPLH) Aboriginal Heritage Inquiry System (AHIS) identified 39 Registered Sites and 26 Other Heritage Places overlapping the PNI Corridor. Refer to report at appendix 2 for more information.

Many of these have closed or unreliable site boundaries due to the volume of sites identified on the Burrup Peninsula. Due to the unreliable nature of the AHIS results, Horizon Heritage Management utilised a methodology of inspecting the PNI Corridor for the physical presence or absence of sites within it, rather than relying on the AHIS results (Horizon Heritage, 2018).

### 5.2 Aboriginal Heritage Survey

Horizon Heritage, Yaburara & Mardudhunera and Wong- Goo-Tt-Oo representatives completed a heritage survey of the proposed PNI Corridor on 16th and 17th of July 2018.

Despite Horizon Heritage's best endeavours to engage all four Aboriginal stakeholder groups for the survey only the Yaburara & Mardudhunera and Wong- Goo-Tt-Oo People participated. Representatives from the Ngarluma and Yindjibarndi groups were invited to attend however they did not to participate. Since completing the survey, the Yindjibarndi People have advised that they do not culturally speak for the Burrup and therefore do not want to be involved in the PNI project.

AGIG plans to further engage with the Ngarluma People to present the survey findings and proposed management strategies, this will be undertaken prior to works commencing and may involve a site visit or survey, outcomes will be noted in Table 3 on completion.

The survey methodology was Site Avoidance (with survey team members spaced across the PNI Corridor undertaking a continuous pedestrian transect along the alignment) with all sites identified within the corridor noted (Horizon Heritage, 2018).

The PNI Corridor overlaps the existing 30 m DBNGP easement which has been extensively disturbed by historic activities associated with its original construction in 1970's.

**Table 3: Aboriginal Stakeholder Engagement**

Date	Group	Consultation Details
2 July 2018	Yaburara & Mardudhunera and Wong- Goo-Tt-Oo	Initial project briefing, discuss and agree approach for heritage survey
16 – 17 July 2018	Yaburara & Mardudhunera and Wong- Goo-Tt-Oo	Site Avoidance Heritage Survey and impacts discussion
27 – 28 August 2018	Yaburara & Mardudhunera and Wong- Goo-Tt-Oo	Review and discuss heritage findings within 50 m wide corridor Digital mapping of actual locations, discussion with AGIG representatives
28 October 2018	Yindjibarndi	Email received from the Yindjibarndi Aboriginal Corporation advising that Yindjibarndi's policy is to only conduct heritage surveys and/or provide cultural heritage advice on Yindjibarndi's traditional country – which does not include the Burrup Peninsula
26 November 2018	Ngarluma	Project meeting with Roina Williams to discuss Ngarluma future involvement in the project

Please note: consultation will be ongoing as the project evolves, and additional events will be added to Table 3 as they occur.



## 6 Heritage survey outcomes

### 6.1 Summary of heritage finds

During the heritage survey, seven Aboriginal sites were physically located within the PNI pipeline easement, refer Table 4. Also see Figure 2 which shows the sites as they appear on the DPLH AHIS database and their physical location as identified during the July 2018 heritage survey.

Each of these sites were previously identified in the DPLH and Woodside archival databases.

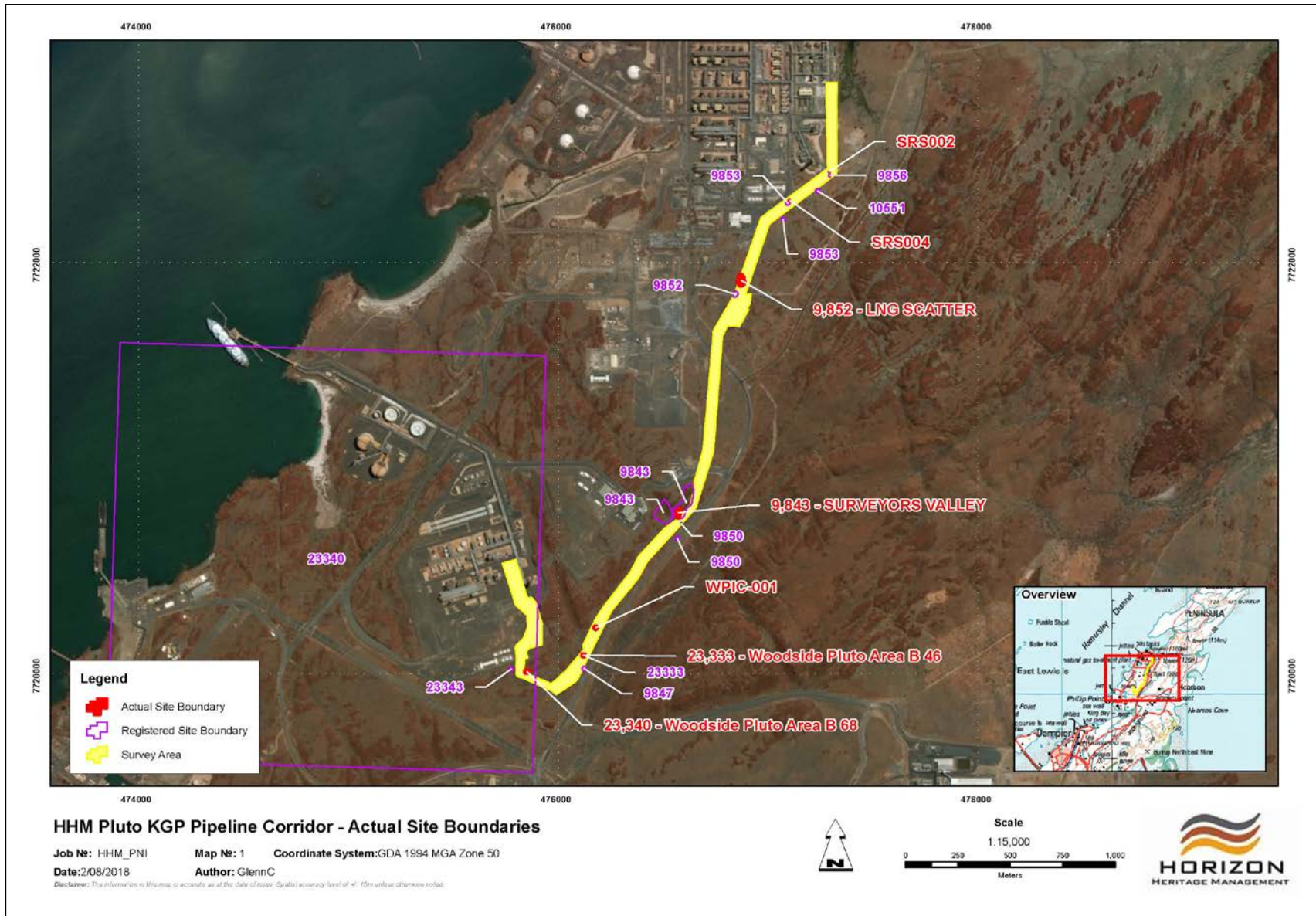
The heritage survey undertaken in July 2018 did not identify any new Aboriginal (archaeological or ethnographic) heritage sites.

Refer to appendix 1 for details maps of each of the seven heritage sites that intersect the proposed disturbance easement.

**Table 4: Summary of Heritage Finds**

Identifier	Site Type	Status	Extent of proposed impact	Site Management Strategy
9843 Surveyors Valley	Engraving	Registered	None – to be avoided	1. Demarcate all heritage sites that intersect the disturbance easement to ensure no indirect impact. Pink and black heritage flagging tape will be used. Refer 8.2 for more details.  2. Invite Aboriginal monitors to oversee initial ground clearing works in the vicinity of heritage sites. Refer 8.3 for more details.  3. Appoint a heritage advisor, which if required may be an archaeologist to assist and oversee monitoring process.
9852 LNG Scatter	Artefacts / Scatter	Registered	None – to be avoided	
23333 Woodside Pluto area B 46	Engraving	Registered	None – to be avoided	
23340 Woodside Pluto area B 68	Artefacts / Scatter, Engraving	Registered	None – to be avoided	
SRS002	Engraving	Woodside Database Archive	None – to be avoided	
SRS004	Grinding Patches	Woodside Database Archive	None – to be avoided	
WPIC-001	Engraving	Woodside Database Archive	None – to be avoided	

Figure 2: PNI Pipeline Route with Aboriginal Heritage Survey Findings



## 7 Key Construction Hazards and proposed mitigation

Construction will be undertaken only within the PNI Corridor and will involve a variety of ground disturbing activities and other general access requirements, which will change from time to time as the construction programme evolves. Table 5 lists the generic key hazards expected during construction, and the mitigating strategies to be put in place. Project personnel will be required to abide by all mitigation strategies, to ensure these key hazards are managed appropriately and to avoid any potential impacts.

**Table 5: Key Hazards to Aboriginal Heritage During Construction**

KEY HAZARDS	MITIGATION STRATEGIES
Vehicle / machinery activity	<ul style="list-style-type: none"> <li>• Ensure contractors are provided with and abide by all approval documentation and management plans.</li> <li>• Vehicle and machinery movements limited to areas that have been subject to heritage clearance or previous disturbance.</li> <li>• Demarcation of heritage places and sites as required, to avoid indirect disturbance.</li> </ul>
Vegetation clearing	<ul style="list-style-type: none"> <li>• Vegetation clearing limited to areas that have heritage clearance.</li> <li>• Ensure contractors are provided with and abide by all approval documentation and management plans.</li> <li>• Demarcation of heritage places and sites as required, to avoid indirect disturbance.</li> <li>• Invite Aboriginal heritage monitors to oversee initial vegetation clearing.</li> <li>• Appoint Heritage Advisor and archaeologist to ensure this management plan is implemented during planning and construction activities.</li> </ul>
Earthworks	<ul style="list-style-type: none"> <li>• Ensure contractors are provided with and abide by all approval documentation and management plans.</li> <li>• Earthworks limited to areas that have been subject to heritage clearance.</li> <li>• Demarcation of heritage places and sites as required to avoid indirect disturbance.</li> <li>• Invite aboriginal heritage monitors to oversee initial earthworks.</li> <li>• Appoint Heritage Advisor and archaeologist to ensure this management plan is implemented during planning and construction activities.</li> </ul>
Maintenance and construction activities	<ul style="list-style-type: none"> <li>• Ensure contractors are provided with and abide by all approval documentation and management plans.</li> <li>• Construction activities limited to areas that have been subject to heritage clearance.</li> <li>• Demarcation of heritage places and sites as required to avoid indirect disturbance.</li> <li>• Invite aboriginal heritage monitors to oversee initial earthworks and any maintenance work in highly sensitive areas.</li> <li>• Appoint Heritage Advisor and archaeologist to ensure this management plan is implemented during planning and construction activities.</li> </ul>
Direct human contact	<ul style="list-style-type: none"> <li>• Demarcation of heritage places and sites as required, to avoid indirect disturbance.</li> <li>• All project personnel and contractors to attend compulsory inductions prior to commencing site work and will undergo training in relation to cultural heritage obligations under this Plan.</li> <li>•</li> </ul>
Generation of dust and vibration (operation of heavy machinery / blasting)	<ul style="list-style-type: none"> <li>• Ongoing monitoring of dust and vibration levels and inspection of heritage places in proximity</li> </ul>

## 8 Aboriginal Heritage Procedures / Control Methods

### 8.1 Inductions and Cultural Heritage Awareness Training

Before commencing work on the PNI, all project personnel must attend a mandatory project induction.

The Aboriginal heritage component of the project induction will ensure participants are made aware of:

- Their obligations and the protected nature of all Aboriginal sites, recorded and unrecorded, under the AHA;
- The procedures and protocols established in this document to avoid disturbance to sites;
- The possibility of encountering new sites and what may constitute a site/cultural material;
- The significance of Aboriginal Sites within and/or in close proximity to all areas associated with the Project; and
- The penalties of disturbance to Aboriginal sites.

### 8.2 Demarcation of Aboriginal Heritage Sites

The outer perimeter of all heritage sites that are located in the PNI easement will be physically demarcated in the field to avoid any indirect disturbance.

The demarcation will be installed using demarcation poles and pink and black heritage tape prior to any activities being undertaken. If required signage will also be installed.

Demarcation will also be installed around other heritage sites that are located close to project construction or operation activities as necessary.

### 8.3 Aboriginal Monitoring of ground disturbing works

Aboriginal stakeholders will be invited to monitor initial ground disturbing activities (i.e. initial vegetation clearing and initial earthworks) when these activities are being conducted near the identified heritage sites as noted in table 4.

The aim of monitoring is to ensure no recorded or unrecorded Aboriginal sites or material is disturbed or destroyed by construction activities in contravention of the Act. Importantly, monitoring facilitates transparent and open involvement of the relevant Aboriginal groups/individuals with an interest in the heritage impacts of the Project.

One (1) Aboriginal representative from each of the Aboriginal Stakeholder groups will be invited to participate in the monitoring activities. The monitors will undertake visual inspections of the work areas prior to disturbance and as work proceeds. Monitoring invitations will be issued to the relevant parties at least 2 working days prior to works commencing.

All personnel working or visiting the Project are required to wear the following PPE:

- Work Boots with toe protectors (AS 2210);
- Safety Helmet (AS 1800 & AS 1801) where required by JSEA or signage;
- Eye Protection with side shields (AS 1336 & AS 1337) where required by JSEA or signage;
- Hearing protection to AS 1270 where signs indicate hearing protection is required;
- High Vis Cotton Shirts with long sleeves and Cotton Long Trousers.

Refer to table 6 for relevant contact details when arranging monitors.

AGIG will engage its own archaeologist to be on site to monitor ground disturbing activities in consultation with the heritage monitors.

**Table 6: Monitoring Contacts**

Stakeholder	Contact Person and Details
Ngarluma People	Roina Williams (Ngarluma Aboriginal Corporation) Ph: 0408 404 897 roina@ngarluma.com.au
Yaburara & Mardudhunera People	Janice Brettner 0400 937 567 janicebrettner@bigpond.com
Wong- Goo-Tt-Oo	Wilfred Hicks 0417 923 705

## 8.4 Archaeological Salvage

The PNI will not impact any of the identified heritage sites, therefore archaeological salvage is not proposed.

## 8.5 Stop work - Aboriginal Heritage Incidents

It is a breach of section 17 of the AHA to disturb or damage an Aboriginal site without prior section 18 Ministerial approval. No ground disturbing work in an Aboriginal heritage site should be conducted without first having Ministerial consent in the form of section 18 consent.

In the event that inadvertent damage occurs to an Aboriginal heritage site within the Project area, the damaging activity will cease immediately, and the following procedures will be followed:

- Work will cease, and the Site Supervisor will be contacted, and the area will be cordoned off with tape (pink and black heritage tape);
- The Site Supervisor will contact the Heritage Advisor to assess the situation to determine the extent of impact and noncompliance;
- If the monitor/s did not make the discovery, the Heritage Advisor must inform the monitors;
- Pending assessment, the Heritage Advisor will contact the DPLH, the relevant Aboriginal Stakeholders immediately;
- The Site supervisor and the Heritage Advisor will investigate the cause of the disturbance;
- The incident will be dealt with and reported on according to AGIG Incident Management System;
- The Heritage Advisor, along with the Site Supervisor, will implement any recommendations or procedures as directed by the DPLH and the Aboriginal Stakeholders.

No work is to be conducted in the damaged area until the issue is resolved, and new procedures are in place.

## 8.6 Stop work – Identification of Aboriginal Sites

Whilst every effort has been made to identify all Aboriginal heritage sites, there may be Aboriginal heritage sites within the Project area that have not been discovered. If cultural material is uncovered or identified, the procedure detailed above must be followed along with the following considerations:

- The Heritage Advisor will contact a qualified archaeologist and Aboriginal monitor/s to determine whether the material constitutes a site as specified under section 5 of the AHA;
- If the material is determined to constitute a site, the Heritage Advisor or suitably qualified archaeologist will conduct the necessary site recording and the area will be avoided and demarcated;
- If the material is deemed not to constitute a site under the AHA, management strategies and next steps will be developed in consultation with the Heritage Advisor, archaeologist, Aboriginal monitor/s and site supervisor;
- Should the area be unavoidable no work is to be conducted in the area until section 18 consent has been granted by the DPLH.

## 8.7 Stop work – Discovery of Skeletal remains

If human remains are uncovered at any stage during the development the incident reporting procedure detailed above must be followed along with the following considerations:

- The Site Supervisor will contact the Western Australian Police Department.
- The Site Supervisor will contact the Heritage Advisor who will contact the DPLH and the Aboriginal Stakeholders. The Aboriginal monitors and archaeologist will be allowed on site with the police for consultation purposes.
- If the remains are decided to be historical Aboriginal, then determination of the procedure will be directed by DPLH and the Aboriginal stakeholders.
- If the remains are not historical Aboriginal, then direction from WA Police will be sought.
- No personnel are allowed to disturb, touch or alter in any way the human remains unless they have been authorised by WA Police or the DPLH.

## 9 Records

It is important that accurate written records are maintained with regard to heritage surveys, monitoring and any heritage breach or incidents as noted below:

- All survey reports will be maintained and appended to this CHMP.
- Timesheets for all monitors overseeing project activities will be maintained and used to support payments. The information captured will include: Date, names, group affiliation, area and works overseen and relevant comments i.e. outcomes, issues, incident, discoveries etc.
- All incident reports and investigation outcomes to be kept in accordance with AGIG's Incident Reporting System.

## APPENDIX 1 - Detailed heritage site maps

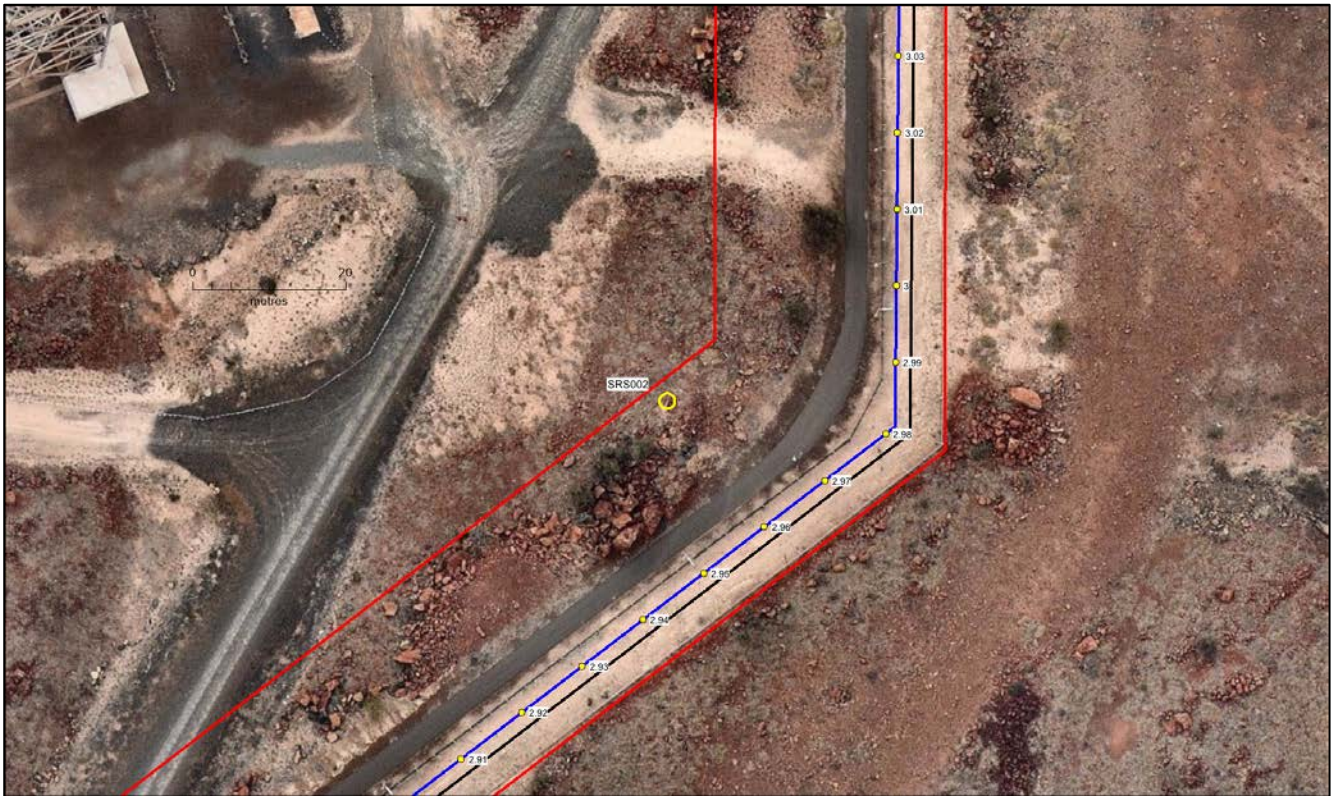


Plate 1: SRS002

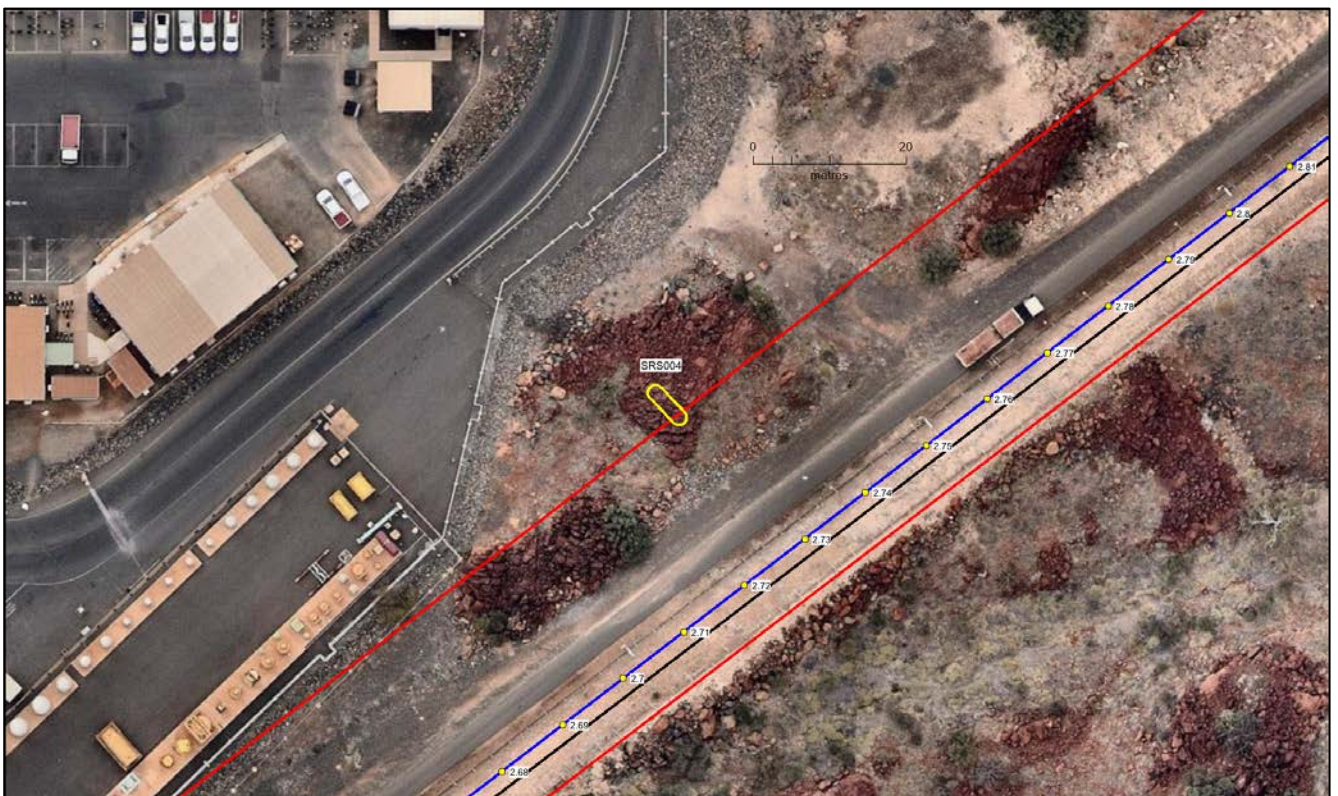


Plate 2: SRS004





Plate 3: LNG Scatter



Plate 4: Surveyors Valley

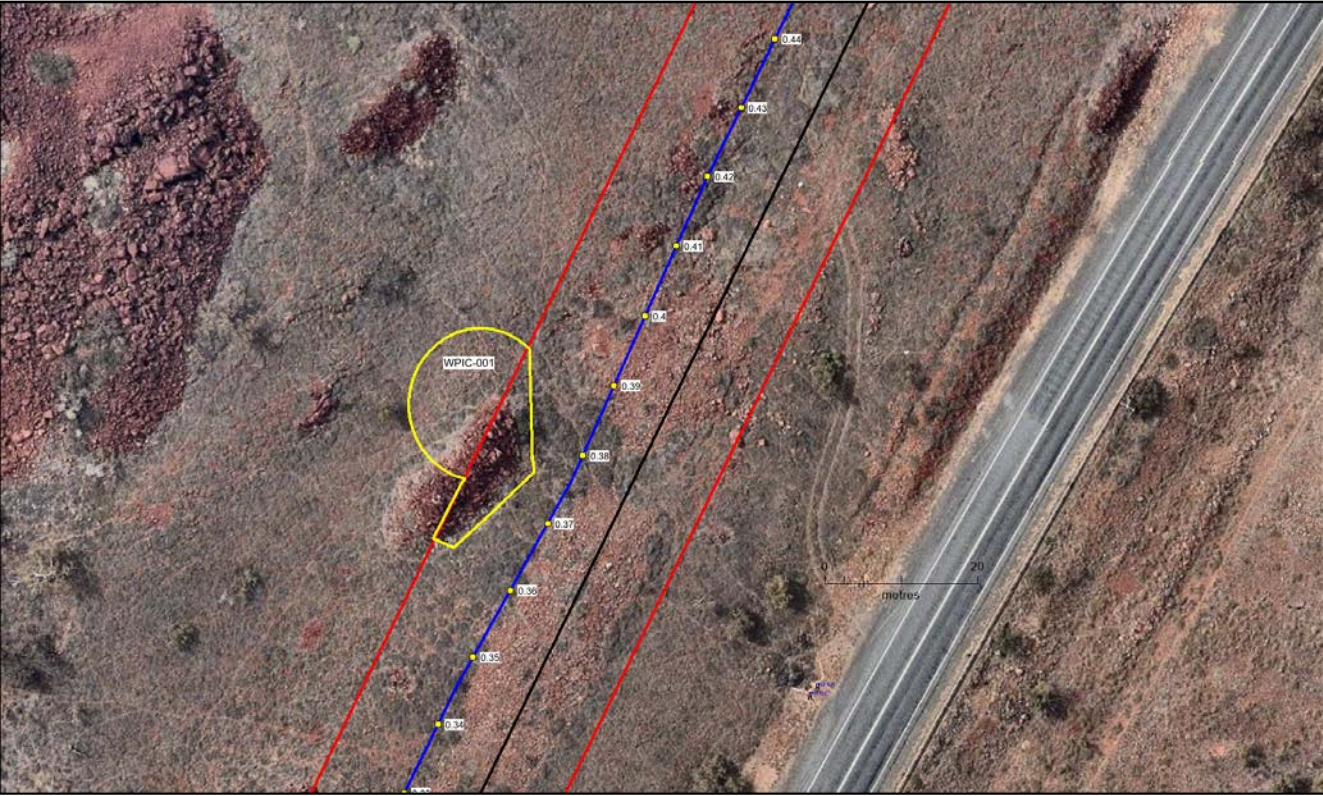


Plate 5: WPIC-001

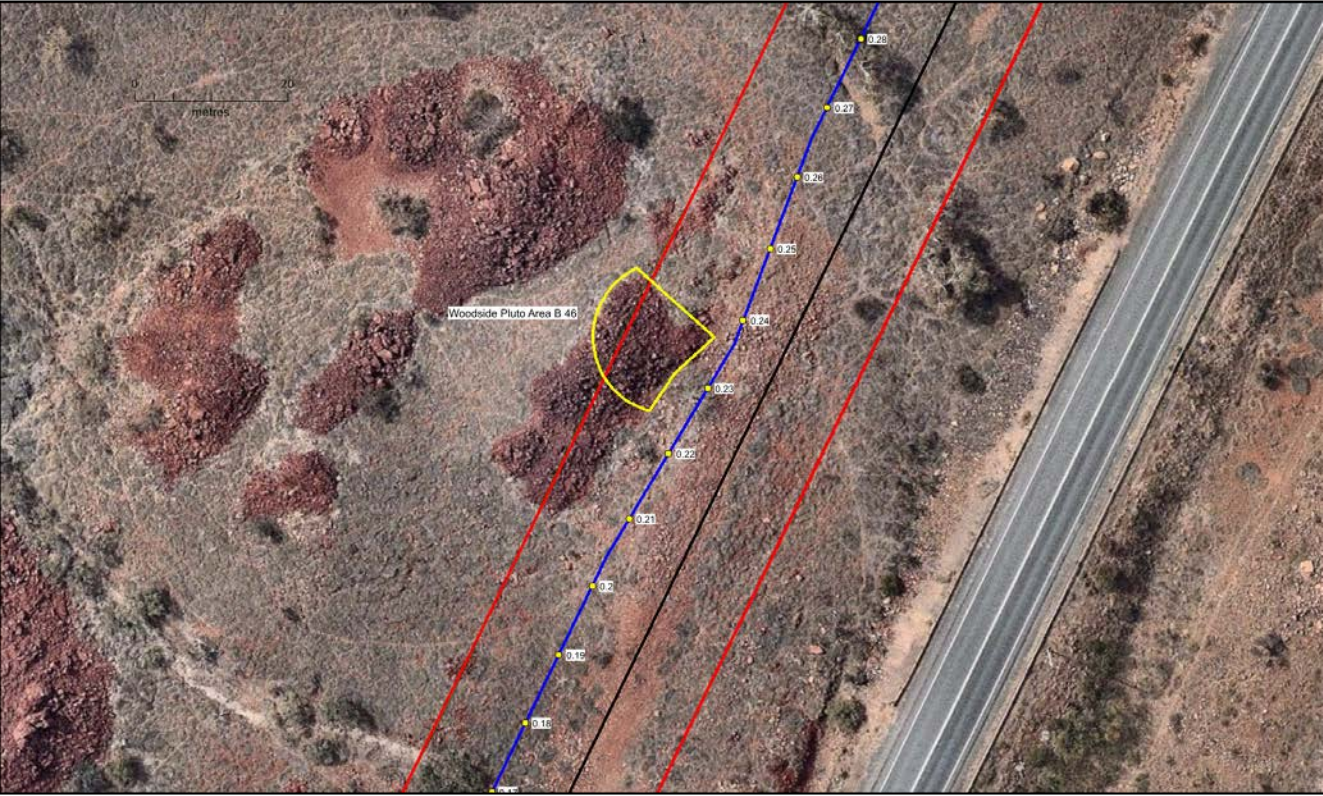


Plate 6: Woodside Pluto Area B 46



Plate 7: Woodside Pluto Area B 68

**APPENDIX 2** - Aboriginal Heritage Site Avoidance Survey Report of the Pluto North West Shelf Interconnector Pipeline Project, July 2018



**OPEN**

**Aboriginal Heritage Site Avoidance Survey report of the Pluto North West Shelf Interconnector Pipeline project with Aboriginal Stakeholder Groups for the Australian Gas Infrastructure Group, July 2018**

---

***Damien Lafrentz & Ben Fordyce***

*Report prepared for:*



## **EXECUTIVE SUMMARY**

### **Brief**

Horizon Heritage Management was engaged by the Australian Gas Infrastructure Group (AGIG) to undertake an Aboriginal heritage survey with Aboriginal Stakeholder groups with heritage interests for the Burrup Peninsula of the Pluto North West Shelf Interconnector Pipeline (PNI) project. The scope of the works is to include archival research, a field investigation and reporting.

### **Project Background**

AGIG is proposing to develop and construct a gas pipeline connecting the Woodside Karratha Gas Plant to the Pluto Site B on the Burrup. AGIG requires an Aboriginal heritage survey with local Aboriginal stakeholder groups of the PNI pipeline corridor. The pipeline corridor is a 50 m wide corridor overlapping the existing 30 m Dampier Bunbury Natural Gas Pipeline (DBNGP) easement and extending to the south into the Pluto LNG plant and to the north into the Karratha Gas Plant. The existing 30 m DBNGP pipeline easement has been extensively disturbed by historic activities associated with its construction in the 1970's.

### **Aboriginal Stakeholder Groups**

Horizon Heritage Management (Horizon Heritage) was engaged by AGIG to facilitate and undertake an Aboriginal heritage site avoidance survey with the representatives from local Aboriginal stakeholder groups (Ngarluma, Yindjibarndi, Yaburara & Mardudunera and Wong-goo-tt-oo) for the PNI project area, near Dampier, Western Australia.

Despite the best endeavors of Horizon Heritage Management to engage all four Aboriginal stakeholder groups for the survey only the Yaburara & Mardudunera and Wong-goo-tt-oo confirmed attendance and participated in this survey.

### **Site Avoidance Aboriginal Heritage Survey**

Horizon Heritage, Yaburara & Mardudunera and Wong-goo-tt-oo representatives with support from Woodside, AGIG and Integrated Heritage Services (IHS), undertook a field trip on the 16<sup>th</sup> and 17<sup>th</sup> of July 2018. The survey methodology was Site Avoidance (with survey team members spaced across the 50 m wide corridor undertaking a continuous pedestrian transect along the alignment) with all sites identified within the corridor noted. AGIG and the Aboriginal stakeholder groups will be provided with a forthcoming Aboriginal heritage survey report.

### **DPLH Aboriginal Heritage Inquiry System Review**

A review of DPLH's Aboriginal Heritage Inquiry System (AHIS) identified 39 Registered Sites and 26 Other Heritage Places overlapping the PNI project area.

Many of these have closed or unreliable site boundaries due to the volume of sites identified on the Burrup Peninsula. Due to the unreliable nature of the AHIS results, Horizon Heritage Management utilised a methodology of inspecting the PNI pipeline corridor for the physical presence or absence of sites within it, rather than relying on the AHIS results. Other heritage information was sourced from Woodside's internal database and IHS.

## Results

Horizon Heritage Management and the Yaburara & Mardudunera and Wong-goo-tt-oo Traditional Owners with support from Woodside, AGIG and Integrated Heritage Services have completed a site avoidance heritage survey of the PNI pipeline project.

Seven Aboriginal sites; 9843 Surveyors Valley, 9854 LNG Scatter, 23333 Woodside Pluto Area B 46, 23340 Woodside Pluto Area B 68, SRS002, SRS004 and WPIC 001 were physically located within the PNI pipeline corridor during the site avoidance survey. These sites are previously identified DPLH and Woodside Database Archived sites.

Horizon Heritage Management and the Yaburara & Mardudunera and Wong-goo-tt-oo Traditional Owners did not identify any new Aboriginal (archaeological or ethnographic) heritage sites during this survey.

## Conclusions

Horizon Heritage Management makes the following conclusion:

1. AGIG have completed their obligations under the *Aboriginal Heritage Act (1972)* to assess the land for Aboriginal heritage values or sites that could be impacted upon by the PNI project.
2. Seven Aboriginal sites; 9843 Surveyors Valley, 9854 LNG Scatter, 23333 Woodside Pluto Area B 46, 23340 Woodside Pluto Area B 68, SRS002, SRS004 and WPIC 001 were physically identified during the site avoidance survey of the PNI project area.
3. Horizon Heritage will supply AGIG with the GIS spatial data for the seven Aboriginal site boundaries.

## Recommendations

Horizon Heritage Management makes the following recommendations:

1. The Australian Gas Infrastructure Group must avoid the seven Aboriginal sites; 9843 Surveyors Valley, 9854 LNG Scatter, 23333 Woodside Pluto Area B 46, 23340 Woodside Pluto Area B 68, SRS002, SRS004 and WPIC 001 identified within the PNI corridor during planning and construction of the Pluto North West Shelf Interconnector Pipeline. AGIG could be in breach of Section 17 of the AHA if they impact on these seven sites without prior authorisation of the Registrar under Section 16 or the consent of the Minister under Section 18 of the AHA.
2. The Australian Gas Infrastructure Group should endeavour to avoid the landscape feature granophyre outcrops found within and around the PNI corridor from impacts. These outcrops are a natural feature of the Burrup that are considered culturally and socially valuable. Some of the engraving heritage values identified during this survey are associated with these features.
3. The Australian Gas Infrastructure Group should have a results meeting with the Aboriginal stakeholder groups post finalisation of the Pluto North West Shelf Interconnector Pipeline alignment.
4. The Australian Gas Infrastructure Group should develop a Cultural Heritage Management Plan (CHMP) so it can manage their requirements and responsibilities under the *WA Aboriginal*

*Heritage Act (1972)* and its work program to minimise risks to the seven Aboriginal sites located within the PNI pipeline corridor.

5. All Australian Gas Infrastructure Group staff and contracting personnel should be made fully aware of their obligations under the *Aboriginal Heritage Act (1972)*.



## Confidentiality

No information in this report was stated to be confidential or restricted.

## Disclaimer

Horizon Heritage Management attempt to give voice to the Aboriginal people who take part in surveys such as the one reported here, however, neither claim the knowledge revealed or vouch for the veracity of the information given.

## Copyright

This report is the property of Horizon Heritage Management. The copyright owners of this report have given permission to AGIG to use the contents of the report.

## GPS Datum and Limitations

The GPS datum used during this survey was WGS 84, utilising a handheld Garmin GPS map 62s. Whereas we endeavour to pinpoint geographical/site locations, the limitations of handheld GPS devices will create inaccuracies on occasion. Also, the potential for error from datum shift is ever present.

## Acknowledgements

Horizon Heritage Management acknowledges the input of AGIG and Woodside staff with coordinating the survey and the input and participation of the Yaburara & Mardudunera and Wong-goo-tt-oo Traditional Owners and David Mott of Integrated Heritage Services.

## Abbreviations

AGIG	Australian Gas Infrastructure Group
AHA	<i>Aboriginal Heritage Act (1972)</i>
AHIS	Aboriginal Heritage Inquiry System
DPLH	Department of Planning, Lands and Heritage
GIS	Geographic Information System
GPS	Global Positioning System
IHS	Integrated Heritage Services
MGA	Map Grid of Australia
NTC	Native Title Claimant Group
PNI	Pluto North West Shelf Interconnector Pipeline
WGS	World Geodetic System

## Horizon Heritage Management

Damien Lafrentz  
Ben Fordyce

**CONTENTS**

**EXECUTIVE SUMMARY .....2**

**1 INTRODUCTION .....8**

1.1 BRIEF .....8

1.2 PROPOSAL DETAILS .....8

1.3 PROPOSED DEVELOPMENT AREA .....8

**2 ABORIGINAL HERITAGE ACT .....9**

**3 METHODOLOGY OVERVIEW .....11**

**4 MURUJUGA .....11**

**5 DPLH RESEARCH.....12**

5.1 DPLH ABORIGINAL HERITAGE INQUIRY SYSTEM RESULTS .....12

5.2 SITE TYPES .....18

**6 IDENTIFICATION OF ABORIGINAL STAKEHOLDER GROUPS .....19**

**7 SURVEY METHODOLOGY .....19**

**8 ABORIGINAL HERITAGE SURVEY .....20**

**9 ABORIGINAL STAKEHOLDER CONSULTATION COMMENTS .....20**

**10 ABORIGINAL HERITAGE SURVEY RESULTS .....21**

**11 CONCLUSIONS .....34**

**12 RECOMMENDATIONS .....34**

**13 REFERENCES .....35**

**14 APPENDIX 1 - DPLH AHIS RESULTS .....36**

*Horizon Heritage Management acknowledges and pays respect to the Yaburara & Mardudunera and Wong-goo-tt-oo Traditional Owners and community.*

**LIST OF FIGURES**

**Figure 1: AGIG PNI Pipeline Corridor ..... 10**  
**Figure 2: PNI Survey Results Map ..... 33**

**LIST OF TABLES**

**Table 1: DPLH Registered Sites ..... 12**  
**Table 2: DPLH Other Heritage Places..... 15**  
**Table 3: Survey Progress..... 20**  
**Table 4: DPLH Registered Aboriginal Sites Results ..... 21**  
**Table 5: Woodside Database Archive Sites..... 28**

**LIST OF PLATES**

**Plate 1: DPLH 9852 context facing south towards KGP infrastructure ..... 22**  
**Plate 2: Primary flakes and reduced cores within DPLH 9852 (scale = 1m) ..... 23**  
**Plate 3: Context of WPIC001 (foreground) and DPLH 23333 (background) facing south ..... 24**  
**Plate 4: Detail of engraving within DPLH 23333..... 25**  
**Plate 5: DPLH 23340 context facing east (scale = 1m) ..... 26**  
**Plate 6: Engraving 1 and 2 within DPLH 3340 (scale = 70cm)..... 27**  
**Plate 7: WPIC001 context facing east towards road ..... 28**  
**Plate 8: WPIC001 detail of Engraving 1 (scale = 20cm)..... 29**  
**Plate 9: WPIC001 detail of Engraving 2 (scale = 10cm) ..... 29**  
**Plate 10: SRS002 context (photograph courtesy of IHS)..... 30**  
**Plate 11: SRS002 motif details (photograph courtesy of IHS) ..... 31**  
**Plate 12: SRS004 context (photograph courtesy of IHS)..... 32**  
**Plate 13: Grinding patch within SRS004 (photograph courtesy of IHS) ..... 32**

## **1 INTRODUCTION**

### **1.1 Brief**

Horizon Heritage Management was engaged by the Australian Gas Infrastructure Group (AGIG) to undertake an Aboriginal heritage survey with Aboriginal Stakeholder groups with heritage interests for the Burrup Peninsula of the Pluto North West Shelf Interconnector Pipeline (PNI) project. The scope of the works is to include archival research, a field investigation and reporting.

### **1.2 Proposal Details**

AGIG is proposing to develop and construct a gas pipeline connecting the Woodside Karratha Gas Plant to the Pluto Site B on the Burrup. AGIG required an Aboriginal heritage survey with local Aboriginal stakeholder groups of the PNI pipeline corridor. The pipeline corridor is a 50 m wide corridor overlapping the existing 30 m Dampier Bunbury Natural Gas Pipeline (DBNGP) easement and extending to the south into the Pluto LNG plant and to the north into the Karratha Gas Plant. The existing 30 m DBNGP pipeline easement has been extensively disturbed by historic activities associated with its construction in the 1970's.

### **1.3 Project Area**

The Pluto North West Shelf Interconnector Pipeline survey area is located on the Burrup Peninsula (*Murujuga*) near Dampier, Western Australia.

The location of the PNI pipeline survey area is shown as Figure 1.

## 2 ABORIGINAL HERITAGE ACT

### Aboriginal Heritage Legislation Requirements

The Western Australian *Aboriginal Heritage Act (1972)* (AHA) was enacted to ensure that Aboriginal heritage to which the AHA applies could be appropriately protected and preserved.

All Aboriginal sites of archaeological and ethnographic significance in Western Australia are protected by the AHA, whether or not they have previously been identified or registered, provided that the site can be determined to meet the Section 5 definitions of the AHA.

A land user is obliged to comply with the provisions of the AHA and failure to do so may result in prosecution. Section 17 of the AHA provides that it is an offence to excavate, destroy, damage, conceal or in any way alter an Aboriginal site. Therefore land users should carefully evaluate how a proposed activity may affect Aboriginal heritage.

### Section 5

An Aboriginal Site means any place to which the *Aboriginal Heritage Act 1972* (Act) applies by operation of Section 5 of the Act:

*(a) any place of importance and significance where persons of Aboriginal descent have, or appear to have, left any object, natural or artificial, used for, or made or adapted for use for, any purpose connected with the traditional cultural life of the Aboriginal people, past or present;*

*(b) any sacred, ritual or ceremonial site, which is of importance and special significance to persons of Aboriginal descent;*

*(c) any place which, in the opinion of the Committee, is or was associated with the Aboriginal people and which is of historical, anthropological, archaeological or ethnographical interest and should be preserved because of its importance and significance to the cultural heritage of the State;*

*(d) any place where objects to which this Act applies are traditionally stored, or to which, under the provisions of this Act, such objects have been taken or removed.*

### Section 17

Section 17 of the Aboriginal Heritage Act 1972 outlines offences relating to Aboriginal sites.

A person who -

(a) excavates, destroys, damages, conceals or in any way alters any Aboriginal site; or

(b) in any way alters, damages, removes, destroys, conceals, or who deals with in a manner not sanctioned by relevant custom, or assumes the possession, custody or control of, any object on or under an Aboriginal site;

(c) commits an offence unless he is acting with the authorisation of the Registrar under section 16 or the consent of the Minister under section 18.

Figure 1: AGIG PNI Pipeline Corridor



### 3 METHODOLOGY OVERVIEW

In completing the brief, Horizon Heritage Management undertook the following steps:

1. **DPLH Research.** The DPLH Inquiry System is periodically updated and research results are current to this report only.

See the DPLH Research Section of this report for details

2. **Site Avoidance Aboriginal Heritage Survey** which involved:

- Background research;
- Pre-consultation with AGIG and the Ngarluma, Yindjibarndi, Yaburara & Mardudunera and Wong-goo-tt-oo Traditional Owners;
- A field inspection of the PNI pipeline survey area with Yaburara & Mardudunera and Wong-goo-tt-oo Traditional Owners.

See the Results Section of this report for details.

3. **Reporting** the results, including:

- The preparation of a draft report;
- The distribution of the draft report to AGIG and the Yaburara & Mardudunera and Wong-goo-tt-oo Traditional Owners for comment; and
- The submission of the final report to AGIG.

### 4 MURUJUGA

Murujuga (meaning ‘hip bone sticking out’), also commonly known as the Burrup Peninsula, is an island in the Dampier Archipelago, in the Pilbara region of Western Australia, containing the town of Dampier.

The peninsula is a unique ecological and archaeological area since it contains the world's largest and most important collection of petroglyphs – ancient Aboriginal rock carvings some claim to date back as far as the last ice age about 10,000 years ago. The collection of standing stones here is the largest in Australia with rock art petroglyphs numbering over one million, many depicting images of the now extinct Tasmanian tiger (<https://en.wikipedia.org/wiki/Murujuga>).

## 5 DPLH RESEARCH

A search of the DPLH register of Aboriginal sites was conducted on the 13<sup>th</sup> of June, 2018. This search was used to provide background information for the heritage survey. A SHP file of the survey area was used to search the AHIS.

The research determined both the registered ethnographic and archaeological sites in and around the survey area and the nature and frequency of surveys completed. In turn, the potential impact of the proposal upon these sites and the likelihood of identifying additional sites and heritage issues were assessed in preparation for the survey.

### 5.1 DPLH Aboriginal Heritage Inquiry System Results

A review of DPLH's Aboriginal Heritage Inquiry System (AHIS) identified 39 Registered Sites and 26 Other Heritage Places overlapping the PNI project area. The DPLH AHIS results are attached as Appendix 1.

#### Terminology (NB that some terminology has varied over the life of the AHA legislation)

**Place ID/Site ID:** This a unique ID assigned by the Department of Planning, Lands and Heritage to the place.

#### Status:

- **Registered Site:** The place has been assessed as meeting Section 5 of the *Aboriginal Heritage Act 1972*.
- **Other Heritage Place which includes:**
  - **Stored Data / Not a Site:** The place has been assessed as not meeting Section 5 of the *Aboriginal Heritage Act 1972*.
  - **Lodged:** Information has been received in relation to the place, but an assessment has not been completed at this *stage* to determine if it meets Section 5 of the *Aboriginal Heritage Act 1972*.

#### Spatial Information:

- **Reliable:** The spatial information recorded in the site file is deemed to be reliable, due to methods of capture.
- **Unreliable:** The spatial information recorded in the site file is deemed to be unreliable due to errors of spatial data capture and/or quality of spatial information reported.

### DPLH Registered Aboriginal Sites

The following are the DPLH Registered Aboriginal Sites which intersect or are within the PNI survey area:

Table 1: DPLH Registered Sites

DPLH ID & SITE NAME	SITE TYPE	STATUS	LOCATION	COMMENTS
9069 Kissing Birds	Engraving	Restricted	Restricted	Restricted boundary covers PNI survey area
9073 Rock Shot	Engraving	Restricted	Restricted	Restricted boundary covers PNI survey area
9215 Haul Road South 06	Artefacts / Scatter, Engraving, Grinding Patches / Grooves, Water Source, Other	Restricted	Restricted	Restricted boundary covers PNI survey area



9216 Haul Road South 07	Artefacts / Scatter, Engraving, Other	Restricted	Restricted	Restricted boundary covers PNI survey area
9255 The Thylacines	Engraving	Male Restricted	Restricted	Restricted boundary covers PNI survey area
9586 Sandfly Rocks	Engraving, Grinding Patches / Grooves, Man-made Structure, Midden / Scatter	Open	Reliable	Boundary falls within PNI survey area
9693 Wishful Thinking	Engraving	Open	Reliable	Boundary falls within PNI survey area
9696 Blast Perch	Engraving	Open	Reliable	Boundary falls within PNI survey area
9813 DRD Area A-07	Artefacts / Scatter, Engraving, Midden / Scatter, Other	Restricted	Restricted	Restricted boundary covers PNI survey area
9818 Climbing Men Complex (Burrup Peninsula F1)	Engraving, Man-Made	Male Restricted	Restricted	Restricted boundary covers PNI survey area.
9843 Surveyors Valley	Engraving	Restricted	Reliable	Site within PNI survey area
9847 Heavy Rock	Man-Made Structure	Open	Reliable	Boundary falls within PNI survey area
9850 King Bay Inland 1 + 2	Engraving	Open	Reliable	Boundary falls within PNI survey area
9852 LNG Scatter	Artefacts / Scatter	Open	Reliable	Site within PNI survey area
9853 Withnell Bay Island 1- 3	Engraving, Grinding Patches / Grooves, Man-Made Structure	Open	Reliable	Boundary falls within PNI survey area
9856 Archaic Face Site	Engraving	Open	Reliable	Boundary falls within PNI survey area
10555 Gas Pipeline 05	Engraving	Open	Unreliable	Boundary falls within PNI survey area
10599 Dampier Archipelago	Engraving	Open	Unreliable	Boundary falls within PNI survey area

**ABORIGINAL HERITAGE SURVEY REPORT OF THE PNI PROJECT FOR AGIG**

10619 Mangrove Creek 1	Engraving, Grinding Patches / Grooves, Man-Made Structure, Midden Scatter	Open	Reliable	Boundary falls within PNI survey area
16760 Burrup Pipeline Project Site 7	Engraving	Open	Reliable	Boundary falls within PNI survey area
16768 Burrup Pipeline Project Site 15	Engraving, Grinding Patches / Grooves	Open	Reliable	Boundary falls within PNI survey area
19642 Woodside Extension Area 25	Engraving, Grinding Patches / Grooves, Man-Made Structure, Mythological	Male Restricted	Restricted	Restricted boundary covers PNI survey area
19648 Woodside Extension Area 31	Engraving, Repository / Cache	Male Restricted	Restricted	Restricted boundary covers PNI survey area
19841 Woodside Extension Area 03	Engraving	Open	Reliable	Boundary falls within PNI survey area
20376 Woodside Extension Area 02	Engraving, Grinding Patches / Grooves, Man-Made Structure	Open	Reliable	Boundary falls within PNI survey area
23333 Woodside Pluto Area B 46	Engraving	Open	Reliable	Site within PNI survey area
23338 Woodside Pluto Area B 66	Artefacts / Scatter, Engraving	Open	Reliable	Boundary falls within PNI survey area
23340 Woodside Pluto Area B 68	Artefacts / Scatter, Engraving	Male Restricted	Restricted	Restricted boundary covers PNI survey area
23346 Woodside Pluto Area B 74	Engraving	Open	Reliable	Boundary falls within PNI survey area
23349 Woodside Pluto Area B 77	Engraving	Open	Reliable	Boundary falls within PNI survey area
23350 Woodside Pluto Area B 78	Engraving	Open	Reliable	Boundary falls within PNI survey area
23372 Woodside Pluto Area B 100	Engraving	Male Restricted	Restricted	Restricted boundary covers PNI survey area
23383 Woodside Pluto Area B 3	Man-Made Structure	Male Restricted	Restricted	Restricted boundary covers PNI survey area

23402 Woodside Pluto Area B 22	Engraving	Male Restricted	Restricted	Restricted boundary covers PNI survey area
23531 Woodside Pluto Area B-AG-40	Engraving	Open	Reliable	Boundary falls within PNI survey area
23532 Woodside Pluto Area B-AG-41	Engraving	Open	Reliable	Boundary falls within PNI survey area
23544 PE10	Artefacts / Scatter, Ceremonial, Camp, Engraving, Hunting Place, Meeting Place, Natural Feature, Plant Resource, Water Source	Open	Reliable	Boundary falls within PNI survey area
23736 WGTO PB 152	Engraving	Male Restricted	Restricted	Restricted boundary covers PNI survey area
23763 WGTO PB 138	Engraving	Male Restricted	Restricted	Restricted boundary covers PNI survey area

### **DPLH Other Heritage Places**

The following are the DPLH Other Heritage Places which intersect or are within the PNI survey area:

**Table 2: DPLH Other Heritage Places**

<b>DPLH PLACE ID &amp; NAME</b>	<b>SITE TYPE</b>	<b>STATUS</b>	<b>LOCATION</b>	<b>COMMENTS</b>
16761 Burrup Pipeline Project Site 8	Grinding Patches / Grooves	Lodged, Open	Reliable	Boundary falls within PNI survey area
16763 Burrup Pipeline Project Site 10	Grinding Patches / Grooves	Lodged, Open	Reliable	Boundary falls within PNI survey area
16765 Burrup Pipeline Project Site 12	Grinding Patches / Grooves	Lodged, Open	Reliable	Boundary falls within PNI survey area
16766 Burrup Pipeline Project Site 13	Grinding Patches / Grooves	Lodged, Open	Reliable	Boundary falls within PNI survey area
16767 Burrup Pipeline Project Site 14	Grinding Patches / Grooves	Lodged, Open	Reliable	Boundary falls within PNI survey area
17292 Burrup Service Corridor 06	Man-Made Structure	Lodged, Open	Reliable	Boundary falls within PNI survey area

19088 DRD 55	Engraving	Lodged, Restricted	Restricted	Restricted boundary covers PNI survey area
190889 DRD 56	Artefacts / Scatter, Engraving, Man-Made Structure, Other	Lodged, Restricted	Restricted	Restricted boundary covers PNI survey area
19090 DRD 57	Engraving	Lodged, Restricted	Restricted	Restricted boundary covers PNI survey area
19093 DRD 60	Engraving	Lodged, Restricted	Restricted	Restricted boundary covers PNI survey area
19094 DRD 61	Engraving	Lodged, Restricted	Restricted	Restricted boundary covers PNI survey area
19100 DRD 69	Engraving	Lodged, Restricted	Restricted	Restricted boundary covers PNI survey area
19157 DRD 71	Engraving, Other	Lodged, Restricted	Restricted	Restricted boundary covers PNI survey area
19160 DRD 73	Artefacts / Scatter, Engraving, Man-Made Structure, Quarry	Lodged, Restricted	Restricted	Restricted boundary covers PNI survey area
19178 DRD 89	Artefacts / Scatter, Engraving, Man-Made Structure	Lodged, Open	Reliable	Boundary falls within PNI survey area
19188 DRD 28	Man-Made Structure	Lodged, Restricted	Restricted	Restricted boundary covers PNI survey area
19726 Woodside Haul Road Expansion 08	Engraving	Lodged, Restricted	Restricted	Restricted boundary covers PNI survey area
23198 PE 1 Camping Beach Area	Camp, Hunting Place, Meeting Place	Lodged, Restricted	Restricted	Restricted boundary covers PNI survey area
23199 PE 2 Meeting Place	Ceremonial, Engraving, Mythological	Lodged, Restricted	Restricted	Restricted boundary covers PNI survey area
23200 PE 3 Men's and Ceremonial Engravings	Ceremonial, Engraving, Mythological	Lodged, Male Restricted	Restricted	Restricted boundary covers PNI survey area
23201 PE 4 Women's Place	Engraving, Grinding Patches / Grooves	Lodged, Female Restricted	Restricted	Restricted boundary covers PNI survey area

23204 PE 7 Men and Women Restricted Place	Ceremonial, Engraving, Mythological, Meeting Place	Restricted	Restricted	Restricted boundary covers PNI survey area
23323 Burrup Peninsula, Murujuga	Artefacts / Scatter, Ceremonial, Engraving, Fish trap, Grinding Patches / Grooves, Historical, Man-Made Structure, Midden Scatter, Modified Tree, Mythological, Quarry, Rockshelter, Skeletal Material / Burial, Arch Deposit, Camp, Hunting Place, Natural Place, Natural Feature, Plant Resource, Shell, Water Source	Restricted	Restricted	Restricted boundary covers PNI survey area
23448 PB023	Mythological	Stored Data / Not a Site	Reliable	Boundary falls within PNI survey area
23492 PB084	Mythological	Stored Data / Not a Site	Reliable	Boundary falls within PNI survey area
25586 WE023 (BMIEA)	Engraving, Arch Deposit	Lodged, Open	Restricted	Restricted boundary covers PNI survey area

**DPLH Heritage Survey Reports**

The AHIS search revealed 41 survey reports related to the registered sites and 43 reports related to the Other Heritage Places identified within the PNI project area. The heritage survey reports associated with the DPLH AHIS search are shown in Appendix 1.

## 5.2 Site Types

The following are the main site types associated with the DAA Registered Sites and Other Heritage Place identified in the DPLH AHIS results:

- ***Artefact Scatters***

These sites are concentrations of cultural material associated with a wide range of activities, such as food processing, tool manufacture and seasonal camping. These sites can be small, localised scatters focused around single stone reduction episodes, or larger, higher density scatters containing hundreds or perhaps thousands of artefacts over a large area.

- ***Artefacts***

An artefact site is a place where human activity is identifiable by the presence of a portable object/s (e.g., stone, glass, bone, shell) utilised or modified by Aboriginal people in relation to traditional cultural life past or present.

- ***Mythological***

A place that is connected to the spirit ancestors in their various manifestations of the 'Dreamtime', and which continues to be important and of special significance to persons of Aboriginal descent.

- ***Engraving***

A motif (either figurative or non-figurative) on a rock surface produced by percussion or abrasion. Engravings are also often referred to as petroglyphs.

- ***Grinding patches/Grooves***

A place where grinding patches or grooves can be found. Grinding patches or grooves are smoothed areas or grooves on rock surfaces (non-portable) that have been created by grinding activity associated with food production such as seed milling, preparation of pigments, tool manufacture and/or maintenance and ritual.

- ***Ceremonial***

A place used for a formal act or series of acts prescribed by ritual, belief in a mythological manifestation, religious belief or observance, protocol or convention that is connected with the traditional cultural life of Aboriginal people past or present.

- ***Man-made structure***

The placement or arrangement, by Aboriginal people, of stone, wood or other material made into a structure for ceremonial or utilitarian purposes.

- ***Quarry***

Places where there is evidence for the extraction of stone or ochre.

## 6 IDENTIFICATION OF ABORIGINAL STAKEHOLDER GROUPS

Horizon Heritage Management was engaged by AGIG to facilitate and undertake an Aboriginal heritage site avoidance survey with the representatives from local Aboriginal stakeholder groups (Ngarluma, Yindjibarndi, Yaburara & Mardudunera and Wong-goo-tt-oo) for the proposed PNI project area on the Burrup (*Murujuga*), near Dampier, Western Australia.

These groups were determined to be Aboriginal Stakeholder Groups based on their recognition as signatories to the Burrup and Maitland Industrial Estates Agreement (BMIEA) entered into with the Western Australian Government in 2003. At that time there were three (Ngarluma Yindjibarndi, Yaburara & Mardudunera and Wong-goo-tt-oo) registered native title claims covering the proposed acquisition area. Being registered native title claimants these groups had the right, under the Native Title Act 1993 (Cth), to negotiate with the Western Australian Government.

The Burrup Agreement enabled the WA Government to compulsory acquire native title rights and interests in the area of the Burrup Peninsula and certain parcels of land near Karratha.

Despite the best endeavors of Horizon Heritage Management to engage all four Aboriginal Stakeholder Groups for the survey only the Yaburara & Mardudunera and Wong-goo-tt-oo confirmed attendance and participated in the survey.

## 7 SURVEY METHODOLOGY

In the completion of this project, Horizon Heritage Management and the Yaburara & Mardudunera and Wong-goo-tt-oo Traditional Owners with support from Woodside, AGIG and IHS, conducted an Aboriginal heritage Site Avoidance survey for AGIG.

The main objectives of this Aboriginal heritage survey were to:

- Identify any known or potential Aboriginal heritage issues that may affect the proposed development.
- Undertake research and/or consultation that may be required to meet the requirements of the *Aboriginal Heritage Act (1972)*.
- Locate/record Aboriginal sites and any other Aboriginal heritage issues.
- Make recommendations regarding the management of the sites.

## 8 ABORIGINAL HERITAGE SURVEY

The Aboriginal heritage survey was conducted on the 16<sup>th</sup> and 17<sup>th</sup> July 2018. During the survey, the survey party met, discussed maps and project details. The following table outlines the progression of the survey and the participants:

**Table 3: Survey Progress**

DATES	ABORIGINAL STAKEHOLDERS	HORIZON HERITAGE MANAGEMENT	AGIG	WOODSIDE/IHS
16 <sup>th</sup> and 17 <sup>th</sup> July 2018	Wilfred Hicks Rhonda Hicks Ivan Dale Mary Cosmos Larissa Dann (16 <sup>th</sup> only) Jayden Dhu (16 <sup>th</sup> only)	Ben Fordyce Damien Lafrentz	Max Goodwin	David Mott

## 9 ABORIGINAL STAKEHOLDER CONSULTATION COMMENTS

The Yaburara & Mardudunera and Wong-goo-tt-oo Traditional Owners raised the following issues, comments and concerns regarding the PNI survey area and project:

1. The Yaburara & Mardudunera and Wong-goo-tt-oo Traditional Owners want AGIG to avoid the seven Aboriginal sites; 9843 Surveyors Valley, 9854 LNG Scatter, 23333 Woodside Pluto Area B 46, 23340 Woodside Pluto Area B 68, SRS002, SRS004 and WPIC 001 identified within the PNI corridor during planning and construction of the Pluto North West Shelf Interconnector Pipeline.
2. The Yaburara & Mardudunera and Wong-goo-tt-oo Traditional Owners want AGIG to avoid the landscape feature granophyre outcrops found within and around the PNI corridor from impacts. These outcrops are a natural feature of the Burrup that are considered culturally and socially valuable. Some of the engraving heritage values identified during this survey are associated with these features.
3. The Yaburara & Mardudunera and Wong-goo-tt-oo Traditional Owners involved in this heritage survey expressed satisfaction with Horizon Heritage Management and AGIG's conduct and the heritage survey methodology and process undertaken.
4. The Yaburara & Mardudunera and Wong-goo-tt-oo Traditional Owners do not consider the PNI project as explained and detailed to them during the survey, will impact negatively on any cultural values if AGIG remains committed to avoidance as the best management strategy for the seven heritage sites identified within the survey area.
5. The Yaburara & Mardudunera and Wong-goo-tt-oo Traditional Owners are satisfied that AGIG have proposed utilising and containing disturbance for the PNI project to areas of existing disturbance associated with the DBNGP and Woodside infrastructure.



## 10 ABORIGINAL HERITAGE SURVEY RESULTS

The DPLH AHIS search identified 39 Registered Sites and 26 Other Heritage Places potentially overlapping with the PNI project area. However, only seven sites were physically identified within the PNI corridor during the Site Avoidance heritage survey. Of these seven, four are DPLH sites and three are Woodside Database Archive sites (see Tables 4 & 5).

The survey results map at Figure 2 shows in red the actual reliable physical location of these seven sites, with the AHIS results (determined to be generally unreliable) shown in purple. There is a clear discrepancy between both sets of results. This is primarily due to the unrefined methods of spatial capturing heritage values in the past using paper maps and map grid references whereas today we use Global Positioning Systems technology to accurately capture spatial information. This unreliability with historic spatial information highlights the value in undertaking heritage surveys to physically confirm the location of heritage sites and the survey methodology of the presence or absence of sites within the survey area as utilised by Horizon Heritage Management.

### DPLH Registered Aboriginal Sites

**Table 4: DPLH Registered Aboriginal Sites Results**

DPLH SITE ID	SITE TYPE	STATUS	LOCATION
9843 Surveyors Valley	Engraving	Registered Site	Reliable – relocated
9852 LNG Scatter	Artefacts / Scatter	Registered Site	Reliable - relocated
23333 Woodside Pluto Area B 46	Engraving	Registered Site	Reliable - relocated
23340 Woodside Pluto Area B 68	Artefacts / Scatter, Engraving	Registered Site Restricted Male access Only	Reliable - relocated

#### DPLH 9843 – Surveyors Valley

The site is located across several granophyre outcrops, separated by an east-west gully. The DPLH site file describes the site as containing 18 engraving panels. Most of the site boundary is located outside of the proposed AGIG alignment. No cultural material was identified within the survey area within the registered site boundaries of DPLH 9843.

However, the landscape feature granophyre outcrop the engraving heritage values are associated with is within the PNI survey area.

### DPLH 9852 – LNG Scatter

This site is a basalt quarry and artefact scatter comprising of reduced cores and primary flakes. Locally sourced cobble has been reduced and there is evidence of *in situ* knapping and core preparation evidenced by knapping floors. The highest density noted was >10 artefacts / m<sup>2</sup>.

Thick spinifex ground cover prevented a comprehensive mapping of the place extent, so for the purposes of this assessment the existing DPLH site boundaries have been assumed to be accurate. A small drainage line marked by Eucalyptus trees is located to the west of the site. The existing DBNGP pipeline marks the eastern boundary. The site is likely a small-scale campsite and area of resource acquisition utilised during the wetter, late-summer months.

**Plate 1: DPLH 9852 context facing south towards KGP infrastructure**



Plate 2: Primary flakes and reduced cores within DPLH 9852 (scale = 1m)



**DPLH 23333 – Woodside Pluto Area B 46**

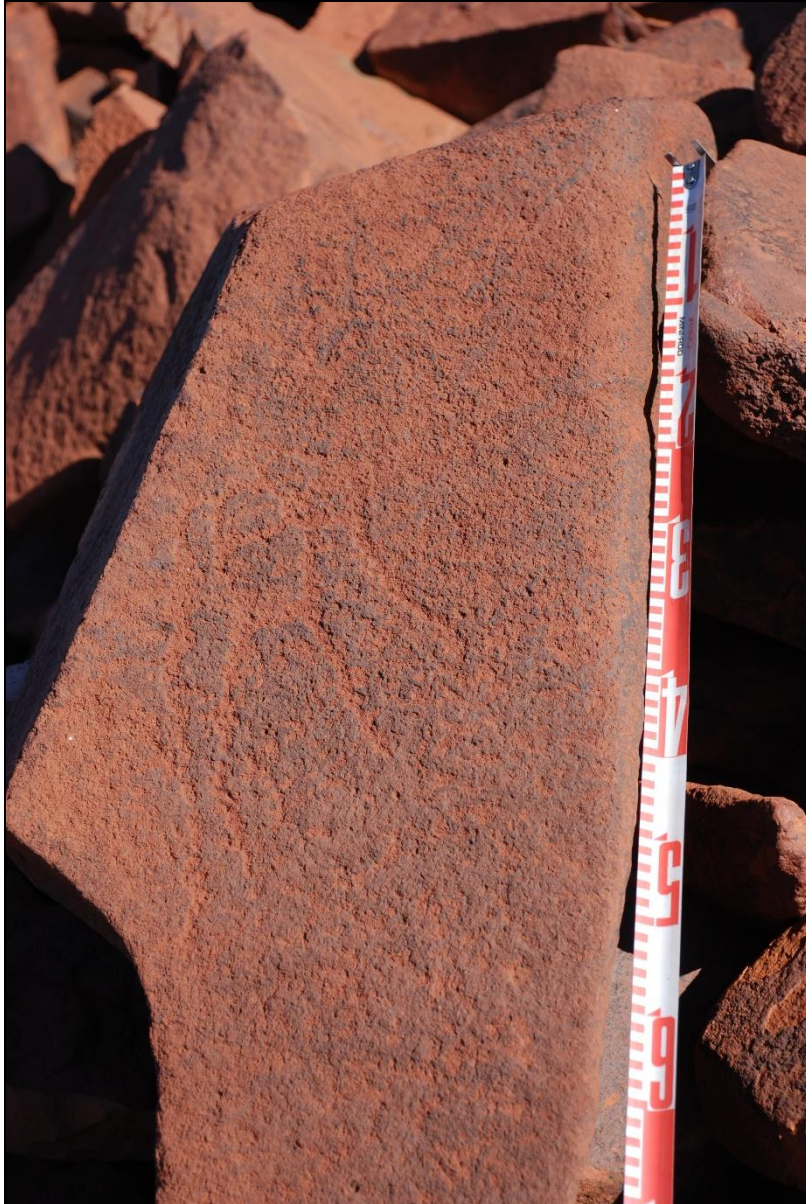
This site located on a low granophyre outcrop along a raised ridgeline. An ephemeral creekline is located to the north, separating this site from nearby WPIC001.

The site consists of a single, small geometric (enigmatic) or potentially figurative (zoomorphic) engraving measuring 25cm x 25cm on a 80 cm x 40 cm panel. The engraving is a pecked outline with infilled elements and is located on a north facing panel, mid-way up the outcrop. It exhibits a heavy degree of weathering. The granophyre boulder containing the engraving measures on 80cm x 40cm x 50cm.

**Plate 3: Context of WPIC001 (foreground) and DPLH 23333 (background) facing south**



Plate 4: Detail of engraving within DPLH 23333



**DPLH 23340 – Woodside Pluto Area B 68**

This site located on a low granophyre outcrop along a raised ridgeline and is immediately adjacent to the enclosed Woodside Pluto infrastructure. The site consists of two engravings within a single panel located on the top of the granophyre outcrop. Engraving 1 appears to be superimposed over engraving 2, presenting a potential temporal separation.

The panel measures approximately 60cm x 30cm on a larger 2m x 1m x 40cm boulder.

Engraving 1 is a small geometric (linear) engraving measuring 7cm x 7cm on a panel. The engraving is an abraded linear motif and exhibits only a small degree of weathering.

Engraving 2 consists of two zoomorphic or potentially anthropomorphic figures measuring 20cm x 15cm. The motif is pecked and infilled and exhibits a small degree of weathering.

**Plate 5: DPLH 23340 context facing east (scale = 1m)**



Plate 6: Engraving 1 and 2 within DPLH 3340 (scale = 70cm)



**Woodside Database Archive Sites**

**Table 5: Woodside Database Archive Sites**

WOODSIDE SITE ID	SITE TYPE	STATUS	LOCATION
SRS002	Engraving	Woodside Database Archive	Reliable – relocated within KGP
SRS004	Grinding Patches	Woodside Database Archive	Reliable – relocated within KGP
WPIC 001	Engraving	Woodside Database Archive	Reliable - relocated

**WPIC001**

This site consists of two engravings located on the northern edge of a low granophyre outcrop. An ephemeral creekline separates this site from nearby DPLH 23333 (Woodside Pluto Area B 46).

Engraving 1 is a small, vaguely zoomorphic (enigmatic) engraving. The engraving is pecked and infilled and located on the northern base of the outcrop. It measures 20cm x 15cm on a 40cm x 30cm panel. The boulder containing the engraving is small and salvageable, measuring 40cm x 30cm x 20cm.

Engraving 2 is a geomorphic (linear) pecked engraving measuring 5cm x 5cm on a large 1m x 1m x 2m granophyre boulder. The panel is north facing with a 5° incline and measures 1m x 50 cm.

**Plate 7: WPIC001 context facing east towards road**





Plate 8: WPIC001 detail of Engraving 1 (scale = 20cm)



Plate 9: WPIC001 detail of Engraving 2 (scale = 10cm)



## SRS002

This site is located within the KGP operations area, less than 50m from the flare tower, at the edge of an access track. Grinding patches recorded as SRS004 are located approximately 140m to the west. The site consists of four motifs located on a single panel facing the coast (approximately 500m away). The motifs consist of four figurative (2 anthropomorphic and one zoomorphic) and two geometric (enigmatic) pecked engravings.

The engravings were not recorded as part of this survey as they have been photographed and mapped utilising a DGPS previously by Woodside. No photographs were taken of this site during the current survey due to safety restrictions when operating within the KGP.

The site was relocated at the recorded location and is consistent with the data held by Woodside. The following photographs were provided by David Mott (IHS) and are provided for reference.

**Plate 10: SRS002 context (photograph courtesy of IHS)**



Plate 11: SRS002 motif details (photograph courtesy of IHS)



#### SRS004

This site consists of three grinding patches located across three separate boulders on a low granophyre outcrop within the KGP operations area. The site is adjacent to an access track and approximately 140m west of SRS002. Due to safety constraints when operating within the flare zone, photographs were not taken of this site during the current survey. Previous detailed site recordings of this location have been undertaken by Woodside, the details of which were provided to Horizon as part of the current assessment.

The site was relocated at the recorded location and is consistent with the data held by Woodside. The following photographs were provided by David Mott (IHS) and are provided for reference.

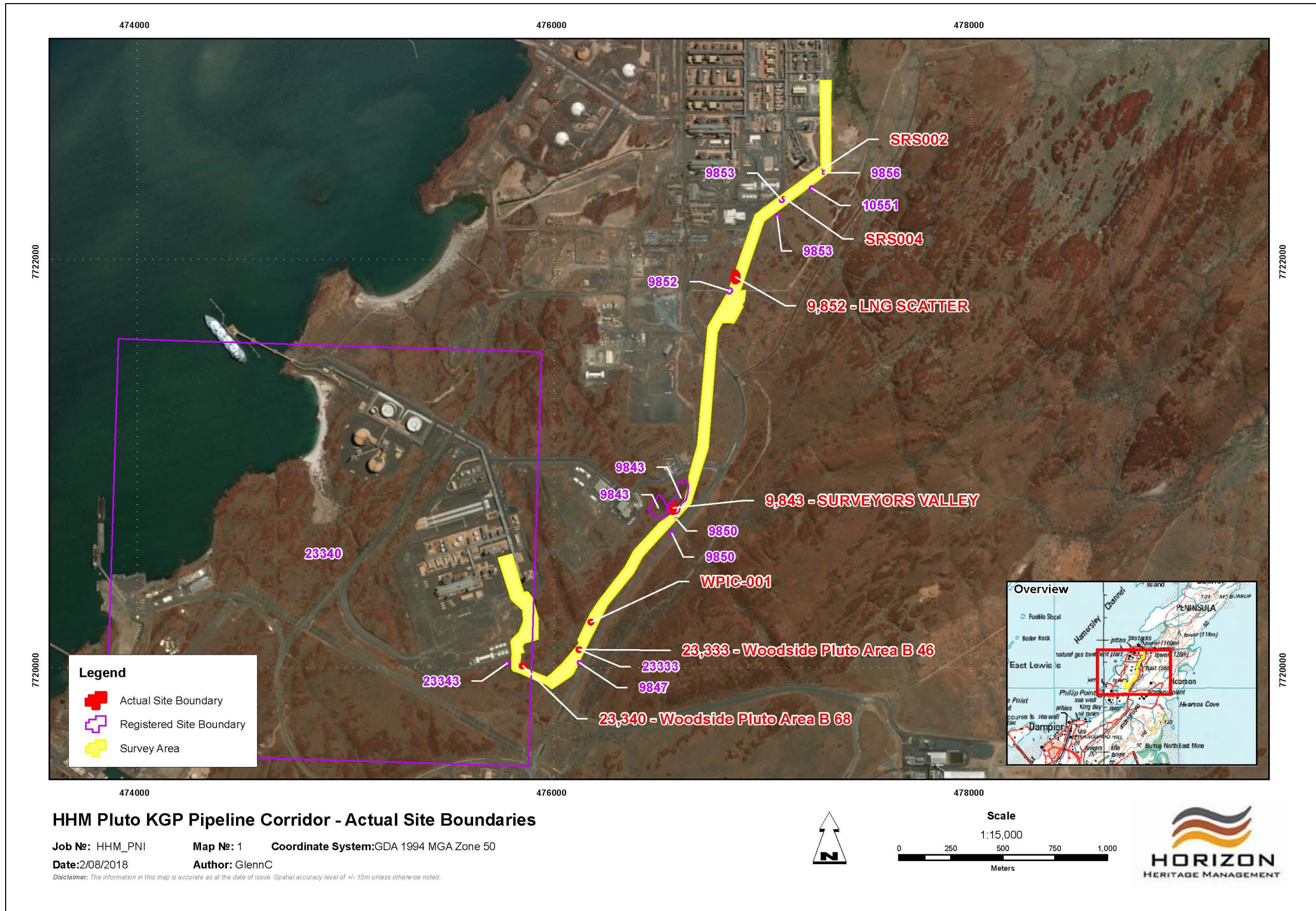
**Plate 12: SRS004 context (photograph courtesy of IHS)**



**Plate 13: Grinding patch within SRS004 (photograph courtesy of IHS)**



Figure 2: PNI Survey Results Map



## 11 CONCLUSIONS

Horizon Heritage Management makes the following conclusions:

1. AGIG have completed their obligations under the *Aboriginal Heritage Act (1972)* to assess the land for Aboriginal heritage values or sites that could be impacted upon by the PNI project.
2. Seven Aboriginal sites; 9843 Surveyors Valley, 9854 LNG Scatter, 23333 Woodside Pluto Area B 46, 23340 Woodside Pluto Area B 68, SRS002, SRS004 and WPIC 001 were physically identified during the site avoidance survey of the PNI project area.
3. Horizon Heritage will supply AGIG with the GIS spatial data for the seven Aboriginal site boundaries.

## 12 RECOMMENDATIONS

Horizon Heritage Management makes the following recommendations:

1. The Australian Gas Infrastructure Group must avoid the seven Aboriginal sites; 9843 Surveyors Valley, 9854 LNG Scatter, 23333 Woodside Pluto Area B 46, 23340 Woodside Pluto Area B 68, SRS002, SRS004 and WPIC 001 identified within the PNI corridor during planning and construction of the Pluto North West Shelf Interconnector Pipeline. AGIG could be in breach of Section 17 of the AHA if they impact on these seven sites without prior authorisation of the Registrar under Section 16 or the consent of the Minister under Section 18 of the AHA.
2. The Australian Gas Infrastructure Group should endeavour to avoid the landscape feature granophyre outcrops found within and around the PNI corridor from impacts. These outcrops are a natural feature of the Burrup that are considered culturally and socially valuable. Some of the engraving heritage values identified during this survey are associated with these features.
3. The Australian Gas Infrastructure Group should have a results meeting with the Aboriginal stakeholder groups post finalisation of the Pluto North West Shelf Interconnector Pipeline alignment.
4. The Australian Gas Infrastructure Group should develop a Cultural Heritage Management Plan (CHMP) so it can manage their requirements and responsibilities under the *WA Aboriginal Heritage Act (1972)* and its work program to minimise risks to the seven Aboriginal sites located within the PNI pipeline corridor.
5. All Australian Gas Infrastructure Group staff and contracting personnel should be made fully aware of their obligations under the *Aboriginal Heritage Act (1972)*.

## 13 REFERENCES

*Aboriginal Heritage Act 1972*. Abbreviated version available from: <[www.daa.wa.gov.au](http://www.daa.wa.gov.au)>.

Department of Indigenous Affairs, 2008, *Aboriginal Heritage Procedure Manual: Section 5. Ethnographic Research and Aboriginal Community Consultation*, Department of Aboriginal Affairs. Available from: <<http://www.dia.wa.gov.au/Heritage--Culture/Sites--Surveys/Aboriginal-Heritage-Procedure-Manual/08-Ethnographic-Research-and-Aboriginal-Community-Consultation/>> [17 April 2008].

<https://en.wikipedia.org/wiki/Murujuga>

<https://maps.daa.wa.gov.au/ahis/>

## 14 APPENDIX 1 - DPLH AHIS RESULTS





### Search Criteria

39 Registered Aboriginal Sites in Shapefile - Survey Area\_region

### Disclaimer

The *Aboriginal Heritage Act 1972* preserves all Aboriginal sites in Western Australia whether or not they are registered. Aboriginal sites exist that are not recorded on the Register of Aboriginal Sites, and some registered sites may no longer exist.

The information provided is made available in good faith and is predominately based on the information provided to the Department of Planning, Lands and Heritage by third parties. The information is provided solely on the basis that readers will be responsible for making their own assessment as to the accuracy of the information. If you find any errors or omissions in our records, including our maps, it would be appreciated if you email the details to the Department at [heritageenquiries@dplh.wa.gov.au](mailto:heritageenquiries@dplh.wa.gov.au) and we will make every effort to rectify it as soon as possible.

### Copyright

Copyright in the information contained herein is and shall remain the property of the State of Western Australia. All rights reserved.

### Coordinate Accuracy

Coordinates (Easting/Northing metres) are based on the GDA 94 Datum. Accuracy is shown as a code in brackets following the coordinates.

Terminology (NB that some terminology has varied over the life of the legislation)

Place ID/Site ID: This a unique ID assigned by the Department of Planning, Lands and Heritage to the place.

Status:

- Registered Site: The place has been assessed as meeting Section 5 of the *Aboriginal Heritage Act 1972*.
- Other Heritage Place which includes:
  - Stored Data / Not a Site: The place has been assessed as not meeting Section 5 of the *Aboriginal Heritage Act 1972*.
  - Lodged: Information has been received in relation to the place, but an assessment has not been completed at this *stage* to determine if it meets Section 5 of the *Aboriginal Heritage Act 1972*.

Access and Restrictions:

- File Restricted = No: Availability of information that the Department of Planning, Lands and Heritage holds in relation to the place is not restricted in any way.
- File Restricted = Yes: Some of the information that the Department of Planning, Lands and Heritage holds in relation to the place is restricted if it is considered culturally sensitive. This information will only be made available if the Department of Planning, Lands and Heritage receives written approval from the informants who provided the information. To request access please contact [heritageenquiries@dplh.wa.gov.au](mailto:heritageenquiries@dplh.wa.gov.au).
- Boundary Restricted = No: Place location is shown as accurately as the information lodged with the Registrar allows.
- Boundary Restricted = Yes: To preserve confidentiality the exact location and extent of the place is not displayed on the map. However, the shaded region (generally with an area of at least 4km<sup>2</sup>) provides a general indication of where the place is located. If you are a landowner and wish to find out more about the exact location of the place, please contact the Department of Planning, Lands and Heritage.
- Restrictions:
  - No Restrictions: *Anyone* can view the information.
  - Male Access Only: Only *males* can view restricted information.
  - Female Access Only: *Only females* can view restricted information.

Legacy ID: This is the former unique number that the former Department of Aboriginal Sites assigned to the place. This has been replaced by the Place ID / Site ID.



### Basemap Copyright

Map was created using ArcGIS software by Esri. ArcGIS and ArcMap are the intellectual property of Esri and are used herein under license. Copyright © Esri. All rights reserved. For more information about Esri software, please visit [www.esri.com](http://www.esri.com).

Satellite, Hybrid, Road basemap sources: Esri, DigitalGlobe, GeoEye, Earthstar Geographics, CNES/Airbus DS, USDA, USGS, AeroGRID, IGN, HERE, DeLorme, Intermap, INCREMENT P, NRCan, Esri Japan, METI, Esri China (Hong Kong), Esri Korea, Esri (Thailand), MapmyIndia, NGCC, © OpenStreetMap contributors, and the GIS User Community.

Topographic basemap sources: Esri, HERE, DeLorme, Intermap, increment P Corp., GEBCO, USGS, FAO, NPS, NRCAN, GeoBase, IGN, Kadaster NL, Ordnance Survey, Esri Japan, METI, Esri China (Hong Kong), swisstopo, MapmyIndia, © OpenStreetMap contributors, and the GIS User Community.



# Aboriginal Heritage Inquiry System

## List of Registered Aboriginal Sites

ID	Name	File Restricted	Boundary Restricted	Restrictions	Status	Type	Knowledge Holders	Coordinate	Legacy ID
9069	KISSING BIRDS	Yes	Yes	No Gender Restrictions	Registered Site	Engraving, Other: New info received - Lot 575-29, 30 & 36 (BMIEA)	*Registered Knowledge Holder names available from DAA	Not available when location is restricted	P03440
9073	ROCK SHOT	Yes	Yes	No Gender Restrictions	Registered Site	Engraving, Other: New info received - Lot 575-29, 30 & 36 (BMIEA)	*Registered Knowledge Holder names available from DAA	Not available when location is restricted	P03444
9215	HAUL ROAD SOUTH 06.	Yes	Yes	No Gender Restrictions	Registered Site	Artefacts / Scatter, Engraving, Grinding Patches / Grooves, Water Source, Other: New info received - Lot 575-29, 30 & 36 (BMIEA)	*Registered Knowledge Holder names available from DAA	Not available when location is restricted	P03107
9216	HAUL ROAD SOUTH 07	Yes	Yes	No Gender Restrictions	Registered Site	Artefacts / Scatter, Engraving, Other: New info received - Lot 575-29, 30 & 36 (BMIEA)	*Registered Knowledge Holder names available from DAA	Not available when location is restricted	P03108
9255	THE THYLACINES	Yes	Yes	Male Access Only	Registered Site	Engraving	*Registered Knowledge Holder names available from DAA	Not available when location is restricted	P03090
9586	SANDFLY ROCKS	No	No	No Gender Restrictions	Registered Site	Engraving, Grinding Patches / Grooves, Man-Made Structure, Midden / Scatter	*Registered Knowledge Holder names available from DAA	477327mE 7723030mN Zone 50 [Reliable]	P02629
9693	WISHFUL THINKING	No	No	No Gender Restrictions	Registered Site	Engraving	*Registered Knowledge Holder names available from DAA	477374mE 7722915mN Zone 50 [Reliable]	P02514
9696	BLAST PERCH	No	No	No Gender Restrictions	Registered Site	Engraving	*Registered Knowledge Holder names available from DAA	476968mE 7722228mN Zone 50 [Reliable]	P02517
9813	DRD AREA A-07	Yes	Yes	No Gender Restrictions	Registered Site	Artefacts / Scatter, Engraving, Midden / Scatter, Other: New info received - Lot 575-29, 30 & 36 (BMIEA)	*Registered Knowledge Holder names available from DAA	Not available when location is restricted	P02357
9818	CLIMBING MEN COMPLEX (Burrup Peninsula F1)	Yes	Yes	Male Access Only	Registered Site	Engraving, Man-Made Structure	*Registered Knowledge Holder names available from DAA	Not available when location is restricted	P02362
9843	SURVEYORS VALLEY	No	No	No Gender Restrictions	Registered Site	Engraving	*Registered Knowledge Holder names available from DAA	476568mE 7720822mN Zone 50 [Reliable]	P02333



# Aboriginal Heritage Inquiry System

## List of Registered Aboriginal Sites

ID	Name	File Restricted	Boundary Restricted	Restrictions	Status	Type	Knowledge Holders	Coordinate	Legacy ID
9847	HEAVY ROCK	No	No	No Gender Restrictions	Registered Site	Man-Made Structure	*Registered Knowledge Holder names available from DAA	476133mE 7720036mN Zone 50 [Reliable]	P02337
9850	KING BAY INLAND 1 + 2	No	No	No Gender Restrictions	Registered Site	Engraving	*Registered Knowledge Holder names available from DAA	476581mE 7720703mN Zone 50 [Reliable]	P02340
9852	LNG SCATTER	No	No	No Gender Restrictions	Registered Site	Artefacts / Scatter	*Registered Knowledge Holder names available from DAA	476853mE 7721858mN Zone 50 [Reliable]	P02342
9853	WITHNELL BAY INLAND 1-3	No	No	No Gender Restrictions	Registered Site	Engraving, Grinding Patches / Grooves, Man-Made Structure	*Registered Knowledge Holder names available from DAA	477092mE 7722264mN Zone 50 [Reliable]	P02343
9856	ARCHAIC FACE SITE	No	No	No Gender Restrictions	Registered Site	Engraving	*Registered Knowledge Holder names available from DAA	477303mE 7722436mN Zone 50 [Reliable]	P02346
10555	GAS PIPELINE 05	No	No	No Gender Restrictions	Registered Site	Engraving	*Registered Knowledge Holder names available from DAA	476639mE 7721055mN Zone 50 [Unreliable]	P01607
10599	DAMPIER ARCHIPELAGO	No	No	No Gender Restrictions	Registered Site	Engraving	*Registered Knowledge Holder names available from DAA	476639mE 7722655mN Zone 50 [Unreliable]	P01598
10619	MANGROVE CREEK 1	No	No	No Gender Restrictions	Registered Site	Engraving, Grinding Patches / Grooves, Man-Made Structure, Midden / Scatter	*Registered Knowledge Holder names available from DAA	477339mE 7722955mN Zone 50 [Reliable]	P01563
16760	Burrup Pipeline Project Site 7	No	No	No Gender Restrictions	Registered Site	Engraving	*Registered Knowledge Holder names available from DAA	477500mE 7722471mN Zone 50 [Reliable]	
16768	Burrup Pipeline Project Site 15	No	No	No Gender Restrictions	Registered Site	Engraving, Grinding Patches / Grooves	*Registered Knowledge Holder names available from DAA	477497mE 7722669mN Zone 50 [Reliable]	
19642	Woodside Extension Area 25	Yes	Yes	Male Access Only	Registered Site	Engraving, Grinding Patches / Grooves, Man-Made Structure, Mythological	*Registered Knowledge Holder names available from DAA	Not available when location is restricted	
19648	Woodside Extension Area 31	Yes	Yes	Male Access Only	Registered Site	Engraving, Repository / Cache	*Registered Knowledge Holder names available from DAA	Not available when location is restricted	



# Aboriginal Heritage Inquiry System

## List of Registered Aboriginal Sites

ID	Name	File Restricted	Boundary Restricted	Restrictions	Status	Type	Knowledge Holders	Coordinate	Legacy ID
19841	Woodside Extension Area 03	No	No	No Gender Restrictions	Registered Site	Engraving	*Registered Knowledge Holder names available from DAA	476639mE 7721186mN Zone 50 [Reliable]	
20376	Woodside Extension Area 02	No	No	No Gender Restrictions	Registered Site	Engraving, Grinding Patches / Grooves, Man-Made Structure	*Registered Knowledge Holder names available from DAA	476689mE 7721385mN Zone 50 [Reliable]	
23333	Woodside Pluto Area B 46	No	No	No Gender Restrictions	Registered Site	Engraving	*Registered Knowledge Holder names available from DAA	476130mE 7720101mN Zone 50 [Reliable]	
23338	Woodside Pluto Area B 66	No	No	No Gender Restrictions	Registered Site	Artefacts / Scatter, Engraving	*Registered Knowledge Holder names available from DAA	475782mE 7720416mN Zone 50 [Reliable]	
23340	Woodside Pluto Area B 68	Yes	Yes	Male Access Only	Registered Site	Artefacts / Scatter, Engraving	*Registered Knowledge Holder names available from DAA	Not available when location is restricted	
23346	Woodside Pluto Area B 74	No	No	No Gender Restrictions	Registered Site	Engraving	*Registered Knowledge Holder names available from DAA	475836mE 7720133mN Zone 50 [Reliable]	
23349	Woodside Pluto Area B 77	No	No	No Gender Restrictions	Registered Site	Engraving	*Registered Knowledge Holder names available from DAA	475860mE 7720296mN Zone 50 [Reliable]	
23350	Woodside Pluto Area B 78	No	No	No Gender Restrictions	Registered Site	Engraving	*Registered Knowledge Holder names available from DAA	475923mE 7720292mN Zone 50 [Reliable]	
23372	Woodside Pluto Area B 100	Yes	Yes	Male Access Only	Registered Site	Engraving	*Registered Knowledge Holder names available from DAA	Not available when location is restricted	
23383	Woodside Pluto Area B 3	Yes	Yes	Male Access Only	Registered Site	Man-Made Structure	*Registered Knowledge Holder names available from DAA	Not available when location is restricted	
23402	Woodside Pluto Area B 22	Yes	Yes	Male Access Only	Registered Site	Engraving	*Registered Knowledge Holder names available from DAA	Not available when location is restricted	
23531	Woodside Pluto Area B-AG-40	No	No	No Gender Restrictions	Registered Site	Engraving	*Registered Knowledge Holder names available from DAA	475807mE 7720382mN Zone 50 [Reliable]	



# Aboriginal Heritage Inquiry System

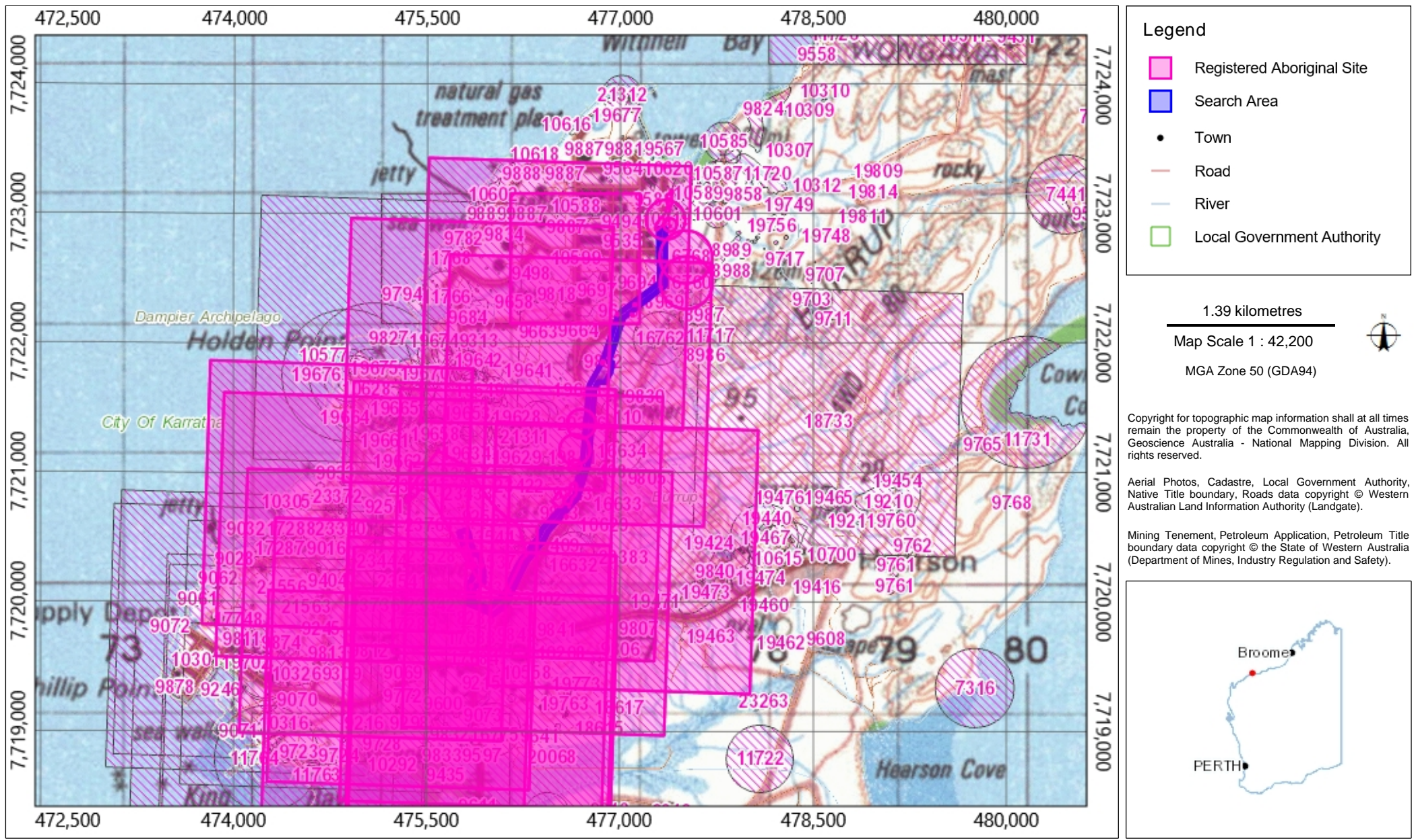
## List of Registered Aboriginal Sites

ID	Name	File Restricted	Boundary Restricted	Restrictions	Status	Type	Knowledge Holders	Coordinate	Legacy ID
23532	Woodside Pluto Area B-AG-41	No	No	No Gender Restrictions	Registered Site	Engraving	*Registered Knowledge Holder names available from DAA	475829mE 7720333mN Zone 50 [Reliable]	
23544	PE10	No	No	No Gender Restrictions	Registered Site	Artefacts / Scatter, Ceremonial, Engraving, Camp, Hunting Place, Meeting Place, Natural Feature, Plant Resource, Water Source	*Registered Knowledge Holder names available from DAA	475856mE 7720626mN Zone 50 [Reliable]	
23736	WGTO PB 152	Yes	Yes	Male Access Only	Registered Site	Engraving	*Registered Knowledge Holder names available from DAA	Not available when location is restricted	
23763	WGTO PB 138	Yes	Yes	Male Access Only	Registered Site	Engraving	*Registered Knowledge Holder names available from DAA	Not available when location is restricted	



# Aboriginal Heritage Inquiry System

## Map of Registered Aboriginal Sites





### Search Criteria

41 Survey Reports with information on the 39 Registered Aboriginal Sites in Shapefile - Survey Area\_region

### Disclaimer

The list of related Survey Reports may be incomplete. Reports shown may not be held at Department of Planning, Lands and Heritage (DPLH). Please consult report holder for more information. Refer to [www.daa.wa.gov.au/heritage](http://www.daa.wa.gov.au/heritage) for information on requesting reports held by DPLH.

The information provided is made available in good faith and is predominately based on the information provided to the Department of Planning, Lands and Heritage by third parties. The information is provided solely on the basis that readers will be responsible for making their own assessment as to the accuracy of the information. If you find any errors or omissions in our records, including our maps, it would be appreciated if you email the details to the Department at [heritageenquiries@dplh.wa.gov.au](mailto:heritageenquiries@dplh.wa.gov.au) and we will make every effort to rectify it as soon as possible.

### Copyright

Copyright in the information contained herein is and shall remain the property of the State of Western Australia. All rights reserved. This includes, but is not limited to, information from the Register of Aboriginal Sites established under and maintained under the Aboriginal Heritage Act 1972.

### Access

Some reports are restricted.





## List of Related Survey Reports

Report ID	Report Title	Report Authors
17508	Submission to the heritage Committee for consideration of a section 18 approval pursuant to the Abori	Wyeth & Associates
17594	Report on an ethnographic survey in the area of extensions to King Bay Industrial Estate	Machin, Barrie
18026	Dampier Archipelago Liquefied Natural Gas Project: A Survey for Aboriginal Sites.	Wright, B.
18028	A Report on the Aboriginal Site Documentation Project Carried out by the Department of Aboriginal Sites under the National Estate Grants Program - 1979-1991. Restricted Version.Oct.1991. (NOT a Heritage Survey Report)	Kalotas, Arpad.
18169	The Stone Structures of Western Australian Aborigines: Their Distribution and Significance. [THESIS]	Benson-Lidholm, G.
19133	King Bay - Hearson Cove Aboriginal Heritage Survey	Vinnicombe, Patricia.
19241	Desktop Aboriginal Heritage Survey, De Wit loc 471 (Pt Reserve 41636), King Bay Industrial Estate, Burrup Peninsula, Shire of Roebourne, Western Australia	Goode, Brad
19294	Archaeological survey of a Telstra cable upgrade, King Bay Road to Mermaid Marine, Burrup Peninsula, Pilbara, Western Australia	Greenfeld, Paul
20010	S18 consultation under the Aboriginal Heritage Act (1972) proposed north-south & east-west infrastructure corridors on the Burrup Peninsula Western Australia	Parker, Ronald T
20015	Consolidation report : Burrup Peninsula north-south infrastructure corridor section 18 application, Aboriginal Heritage Act 1972 (WA)	Draper, Neale
22023	Aboriginal Heritage Survey Report proposed Agrium Lease Area Burrup West Industrial Estate	Clarke, John
22243	An archaeological survey for the proposed Woodside Pluto LNG Development, Industrial Site B, Burrup Peninsula, WA : September 2006 [CLOSED]	Draper, Neale ; Boone Law, W ; Liebelt, B. ; Czerwinski, P. ; Pemberton, F. ; Mott, D. ; Maland, A
22276	Report of an ethnographic survey of the proposed Woodside Pluto LNG development, Industrial Site B, Burrup Peninsula, Western Australia.	Australian Interaction Consultants
22289	Woodside Energy Ltd - Notice under Section 18 of the Aboriginal Heritage Act 1972	Woodside Energy
22290	Woodside Pluto Project S18 Application, Burrup Industrial Site B: Indigenous Heritage Consolidation Report	Draper, Neale
22362	Supplement to : Report of an ethnographic survey of the proposed Woodside Pluto LNG development, Industrial Site B, Burrup Peninsula, Western Australia.	Australian Interaction Consultants
22388	Report on an Aboriginal Heritage Survey of Woodside Energy Limited Pluto Project Area B	O'Connor, R & E Pty Ltd.
22421	Woodside Energy Limited North West Shelf Joint Venture Aboriginal Sites Audit	Draper, Neale



## Aboriginal Heritage Inquiry System

### List of Related Survey Reports

Report ID	Report Title	Report Authors
22792	Aboriginal Cultural Heritage Site Verification Survey, Pluto Industrial Site B, Burrup Peninsula, WA	Mott, David
22983	The Report of an Ethnographic Survey and Cultural Significance Assessment of Lot 314, King Bay Industrial Estate Burrup Peninsula, Dampier, West Pilbara Region Western Australia	Anthropos Australis Pty Ltd
28136	Report on an Ethnographic Survey of Site D, Burrup Peninsula	R & E O'Connor Pty Ltd
28276	The Report of an Aboriginal Heritage Survey, Aboriginal Site Recording, Cultural Significance Assessment and Consultation Under Section 18 of the Aboriginal Heritage Act 1972, of the Proposed Burrup Nitrates Technical Ammonium Nitrate Project Area, B	Anthropos Australis Pty Ltd
28277	The Report of an Archaeological Site Identification Survey of Burrup Nitrates Proposed Technical Ammonium Nitrate Production Facility at Burrup Industrial Estate Site D, Western Australia	Chisholm, Scott B
101856	An archaeological Survey of the Dampier-Perth Natural Gas Pipeline Section 1 : Burrup Peninsula-Yannarie River	Pickering, M.
101929	Ethnographic report Aboriginal heritage survey	Machin, Barrie
101931	Report of an Archaeological Survey : Woodside Burrup extension areas Burrup Peninsula, Pilbara Western Australia	Morse, Kate
102005	Report on an Ethnographic Survey in the Area of Extensions to King Bay Industrial Estate.	Machin, B
102046	Report on Archaeological Sites Located by the Cultural Monitoring Programme during the Construction Phase of the Burrup Pipeline Project. May 1998.	Lantzke, D
102222	Dampier Port Authority - King Bay Leases, Possible Unauthorized Disturbance to Aboriginal Site P02440. Short Report. Jan.1998.	Astron Environmental.
102251	Dampier Archaeological Project: Survey and Salvage ...Burrup Peninsula-Catchment Areas, Geomorphic Zones & Tabulns : 1984	Dept of Aboriginal Sites.
102500	Report of an Aboriginal Heritage Survey of the Proposed Extensions to the Pilbara Energy Pty Ltd Gas Pipeline - Woodside to Karratha Inlet Station. April 1996.	Morse, K.
102919	Dampier Archipelago Liquefied Natural Gas Project. A Survey for Aboriginal Sites. Progress Report Nov-Dec.1980.	Rhoads, J.
103009	Dampier Archipelago Liquefied Natural Gas Project: A Survey for Aboriginal Sites Progress Report Sept & Oct 1980.	Rhoads, J.
103077	Burrup Peninsula Aboriginal Heritage Project. A Report to the Department of Conservation and Land Management 1993.	Veth, P. & Bradshaw, E. & Gara, T. Et Al.
103203	Report of an Aboriginal Heritage Survey Undertaken at the Proposed Methanol Plant Area, Burrup Peninsula.	Robinson, M., Murphy, A., Lantzke, D.



## Aboriginal Heritage Inquiry System

### List of Related Survey Reports

Report ID	Report Title	Report Authors
103931	Photogrammetric Analysis of Petroglyphs.	Dixon, C.
104088	An Archaeological Survey for Department of Resources Development, Burrup Peninsula.	Kirkby, I.
106178	Site identification survey under the Aboriginal Heritage Act (1972) Weebo Homestead by-pass road in the North Western Goldfields region of Western Australia : volume 2 of 4 - The Ngalia People	Parker, Susan ; Parker, Ronald T
106641	Burrup Peninsula north - south service corridor archaeological report for an application under section 18, Aboriginal Heritage Act 1972 (WA)	Draper, Neale
106644	S18 consultation under the Aboriginal Heritage Act (1972) of proposed north-south & east-west infrastructure corridors on the Burrup Peninsula Western Australia	Parker, Ronald T
106774	Burrup Peninsula north - south service corridor archaeological report for an application under Section 18 Aboriginal Heritage act 1972 (WA)	Draper, Neale



### Search Criteria

26 Other Heritage Places in Shapefile - Survey Area\_region

### Disclaimer

The Aboriginal Heritage Act 1972 preserves all Aboriginal sites in Western Australia whether or not they are registered. Aboriginal sites exist that are not recorded on the Register of Aboriginal Sites, and some registered sites may no longer exist.

The information provided is made available in good faith and is predominately based on the information provided to the Department of Planning, Lands and Heritage by third parties. The information is provided solely on the basis that readers will be responsible for making their own assessment as to the accuracy of the information. If you find any errors or omissions in our records, including our maps, it would be appreciated if you email the details to the Department at [heritageenquiries@dplh.wa.gov.au](mailto:heritageenquiries@dplh.wa.gov.au) and we will make every effort to rectify it as soon as possible.

### Copyright

Copyright in the information contained herein is and shall remain the property of the State of Western Australia. All rights reserved.

### Coordinate Accuracy

Coordinates (Easting/Northing metres) are based on the GDA 94 Datum. Accuracy is shown as a code in brackets following the coordinates.

Terminology (NB that some terminology has varied over the life of the legislation)

Place ID/Site ID: This a unique ID assigned by the Department of Planning, Lands and Heritage to the place.

Status:

- Registered Site: The place has been assessed as meeting Section 5 of the Aboriginal Heritage Act 1972.
- Other Heritage Place which includes:
  - Stored Data / Not a Site: The place has been assessed as not meeting Section 5 of the Aboriginal Heritage Act 1972.
  - Lodged: Information has been received in relation to the place, but an assessment has not been completed at this stage to determine if it meets Section 5 of the Aboriginal Heritage Act 1972.

Access and Restrictions:

- File Restricted = No: Availability of information that the Department of Planning, Lands and Heritage holds in relation to the place is not restricted in any way.
- File Restricted = Yes: Some of the information that the Department of Planning, Lands and Heritage holds in relation to the place is restricted if it is considered culturally sensitive. This information will only be made available if the Department of Planning, Lands and Heritage receives written approval from the informants who provided the information. To request access please contact [heritageenquiries@dplh.wa.gov.au](mailto:heritageenquiries@dplh.wa.gov.au).
- Boundary Restricted = No: Place location is shown as accurately as the information lodged with the Registrar allows.
- Boundary Restricted = Yes: To preserve confidentiality the exact location and extent of the place is not displayed on the map. However, the shaded region (generally with an area of at least 4km<sup>2</sup>) provides a general indication of where the place is located. If you are a landowner and wish to find out more about the exact location of the place, please contact the Department of Planning, Lands and Heritage.
- Restrictions:
  - No Restrictions: Anyone can view the information.
  - Male Access Only: Only males can view restricted information.
  - Female Access Only: Only females can view restricted information.

Legacy ID: This is the former unique number that the former Department of Aboriginal Sites assigned to the place. This has been replaced by the Place ID / Site ID.



### Basemap Copyright

Map was created using ArcGIS software by Esri. ArcGIS and ArcMap are the intellectual property of Esri and are used herein under license. Copyright © Esri. All rights reserved. For more information about Esri software, please visit [www.esri.com](http://www.esri.com).

Satellite, Hybrid, Road basemap sources: Esri, DigitalGlobe, GeoEye, Earthstar Geographics, CNES/Airbus DS, USDA, USGS, AeroGRID, IGN, HERE, DeLorme, Intermap, INCREMENT P, NRCan, Esri Japan, METI, Esri China (Hong Kong), Esri Korea, Esri (Thailand), MapmyIndia, NGCC, © OpenStreetMap contributors, and the GIS User Community.

Topographic basemap sources: Esri, HERE, DeLorme, Intermap, increment P Corp., GEBCO, USGS, FAO, NPS, NRCAN, GeoBase, IGN, Kadaster NL, Ordnance Survey, Esri Japan, METI, Esri China (Hong Kong), swisstopo, MapmyIndia, © OpenStreetMap contributors, and the GIS User Community.



# Aboriginal Heritage Inquiry System

## List of Other Heritage Places

ID	Name	File Restricted	Boundary Restricted	Restrictions	Status	Type	Knowledge Holders	Coordinate	Legacy ID
16761	Burrup Pipeline Project Site 8	No	No	No Gender Restrictions	Lodged	Grinding Patches / Grooves	*Registered Knowledge Holder names available from DAA	477368mE 7722227mN Zone 50 [Reliable]	
16763	Burrup Pipeline Project Site 10	No	No	No Gender Restrictions	Lodged	Grinding Patches / Grooves	*Registered Knowledge Holder names available from DAA	477425mE 7722354mN Zone 50 [Reliable]	
16765	Burrup Pipeline Project Site 12	No	No	No Gender Restrictions	Lodged	Grinding Patches / Grooves	*Registered Knowledge Holder names available from DAA	477448mE 7722395mN Zone 50 [Reliable]	
16766	Burrup Pipeline Project Site 13	No	No	No Gender Restrictions	Lodged	Grinding Patches / Grooves	*Registered Knowledge Holder names available from DAA	477448mE 7722396mN Zone 50 [Reliable]	
16767	Burrup Pipeline Project Site 14	No	No	No Gender Restrictions	Lodged	Grinding Patches / Grooves	*Registered Knowledge Holder names available from DAA	477466mE 7722385mN Zone 50 [Reliable]	
17292	BURRUP SERVICE CORRIDOR 06	No	No	No Gender Restrictions	Lodged	Man-Made Structure	*Registered Knowledge Holder names available from DAA	475733mE 7719903mN Zone 50 [Reliable]	
19088	DRD 55	Yes	Yes	No Gender Restrictions	Lodged	Engraving, Other: new info received - Lot 575-14 (BMIEA)	*Registered Knowledge Holder names available from DAA	Not available when location is restricted	
19089	DRD 56	Yes	Yes	No Gender Restrictions	Lodged	Artefacts / Scatter, Engraving, Man-Made Structure, Other: new info received - Lot 575-14 (BMIEA)	*Registered Knowledge Holder names available from DAA	Not available when location is restricted	
19090	DRD 57	Yes	Yes	No Gender Restrictions	Lodged	Engraving, Other: new info received - Lot 575-14 (BMIEA)	*Registered Knowledge Holder names available from DAA	Not available when location is restricted	
19093	DRD 60	Yes	Yes	No Gender Restrictions	Lodged	Engraving, Other: new info received - Lot 575-14 (BMIEA)	*Registered Knowledge Holder names available from DAA	Not available when location is restricted	
19094	DRD 61	Yes	Yes	No Gender Restrictions	Lodged	Engraving, Other: new info received - Lot 575-14 (BMIEA)	*Registered Knowledge Holder names available from DAA	Not available when location is restricted	
19100	DRD 69	Yes	Yes	No Gender Restrictions	Lodged	Engraving, Other: new info received - Lot 575-14 (BMIEA)	*Registered Knowledge Holder names available from DAA	Not available when location is restricted	



# Aboriginal Heritage Inquiry System

## List of Other Heritage Places

ID	Name	File Restricted	Boundary Restricted	Restrictions	Status	Type	Knowledge Holders	Coordinate	Legacy ID
19157	DRD 71	Yes	Yes	No Gender Restrictions	Lodged	Engraving, Other: new info received - Lot 575-14 (BMIEA)	*Registered Knowledge Holder names available from DAA	Not available when location is restricted	
19160	DRD 73	Yes	Yes	No Gender Restrictions	Lodged	Artefacts / Scatter, Engraving, Man-Made Structure, Quarry, Other: new info received - Lot 575-14 (BMIEA)	*Registered Knowledge Holder names available from DAA	Not available when location is restricted	
19178	DRD 89	No	No	No Gender Restrictions	Lodged	Artefacts / Scatter, Engraving, Man-Made Structure	*Registered Knowledge Holder names available from DAA	476729mE 7720685mN Zone 50 [Reliable]	
19188	DRD 28	Yes	Yes	No Gender Restrictions	Lodged	Man-Made Structure, Other: New info received - Lot 575-03 (BMIEA)	*Registered Knowledge Holder names available from DAA	Not available when location is restricted	
19726	Woodside Haul Road Expansion 08	Yes	Yes	No Gender Restrictions	Lodged	Engraving, Other: New info received - Lot 575-03 (BMIEA)	*Registered Knowledge Holder names available from DAA	Not available when location is restricted	
23198	PE 1 Camping Beach Area	Yes	Yes	No Gender Restrictions	Lodged	Camp, Hunting Place, Meeting Place	*Registered Knowledge Holder names available from DAA	Not available when location is restricted	
23199	PE 2 Meeting Place	Yes	Yes	No Gender Restrictions	Lodged	Ceremonial, Engraving, Mythological	*Registered Knowledge Holder names available from DAA	Not available when location is restricted	
23200	PE 3 Men's and Ceremonial Engravings	Yes	Yes	Male Access Only	Lodged	Ceremonial, Engraving, Mythological	*Registered Knowledge Holder names available from DAA	Not available when location is restricted	
23201	PE 4 Women's Place	Yes	Yes	Female Access Only	Lodged	Ceremonial, Engraving, Mythological	*Registered Knowledge Holder names available from DAA	Not available when location is restricted	
23204	PE 7 Men and Women Restricted Place	Yes	Yes	No Gender Restrictions	Lodged	Ceremonial, Engraving, Mythological, Meeting Place	*Registered Knowledge Holder names available from DAA	Not available when location is restricted	



# Aboriginal Heritage Inquiry System

## List of Other Heritage Places

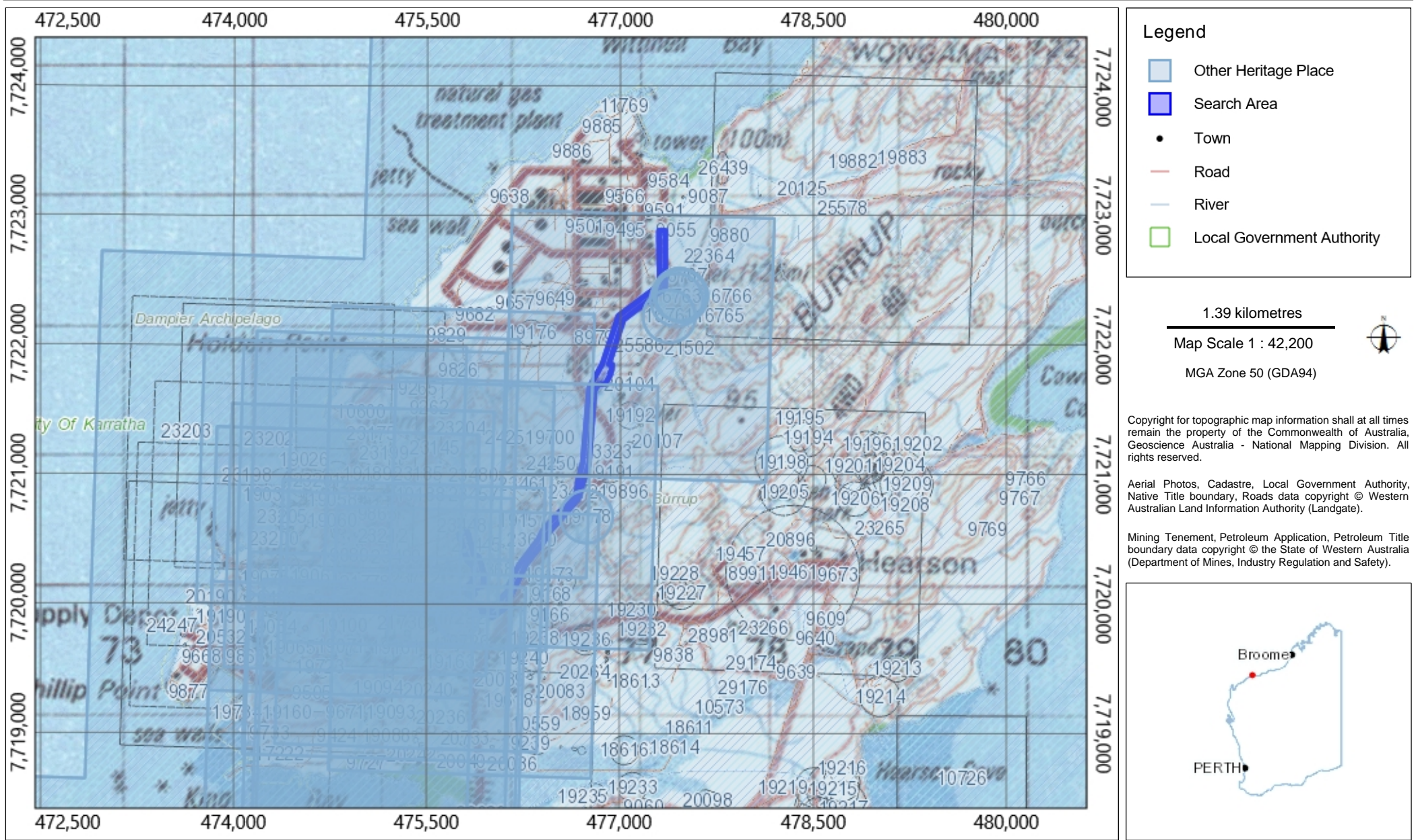
ID	Name	File Restricted	Boundary Restricted	Restrictions	Status	Type	Knowledge Holders	Coordinate	Legacy ID
23323	Burrup Peninsula, Murujuga	Yes	Yes	No Gender Restrictions	Contact DAA	Artefacts / Scatter, Ceremonial, Engraving, Fish Trap, Grinding Patches / Grooves, Historical, Man-Made Structure, Midden / Scatter, Modified Tree, Mythological, Quarry, Rockshelter, Skeletal Material / Burial, Arch Deposit, Camp, Hunting Place, Massacre, Meeting Place, Named Place, Natural Feature, Plant Resource, Shell, Water Source	*Registered Knowledge Holder names available from DAA	Not available when location is restricted	
23448	PB023	No	No	No Gender Restrictions	Stored Data / Not a Site	Mythological	*Registered Knowledge Holder names available from DAA	475762mE 7720562mN Zone 50 [Reliable]	
23492	PB084	No	No	No Gender Restrictions	Stored Data / Not a Site	Mythological	*Registered Knowledge Holder names available from DAA	475786mE 7720420mN Zone 50 [Reliable]	
25586	WE023 (BMIEA)	Yes	Yes	No Gender Restrictions	Lodged	Engraving, Arch Deposit	*Registered Knowledge Holder names available from DAA	Not available when location is restricted	





# Aboriginal Heritage Inquiry System

## Map of Other Heritage Places





### Search Criteria

43 Survey Reports with information on the 26 Other Heritage Places in Shapefile - Survey Area\_region

### Disclaimer

The list of related Survey Reports may be incomplete. Reports shown may not be held at Department of Planning, Lands and Heritage (DPLH). Please consult report holder for more information. Refer to [www.daa.wa.gov.au/heritage](http://www.daa.wa.gov.au/heritage) for information on requesting reports held by DPLH.

The information provided is made available in good faith and is predominately based on the information provided to the Department of Planning, Lands and Heritage by third parties. The information is provided solely on the basis that readers will be responsible for making their own assessment as to the accuracy of the information. If you find any errors or omissions in our records, including our maps, it would be appreciated if you email the details to the Department at [heritageenquiries@dplh.wa.gov.au](mailto:heritageenquiries@dplh.wa.gov.au) and we will make every effort to rectify it as soon as possible.

### Copyright

Copyright in the information contained herein is and shall remain the property of the State of Western Australia. All rights reserved. This includes, but is not limited to, information from the Register of Aboriginal Sites established under and maintained under the Aboriginal Heritage Act 1972.

### Access

Some reports are restricted.



## List of Related Survey Reports

Report ID	Report Title	Report Authors
19133	King Bay - Hearson Cove Aboriginal Heritage Survey	Vinnicombe, Patricia.
19499	Dampier Archaeological Project: Survey and Salvage of Aboriginal Sites on Portion of the Burrup Peninsula for Woodside Offshore Petroleum Pty Ltd. Map Folio 1984.	Dept of Aboriginal Sites.
20009	Report on an Aboriginal Heritage Survey of the Burrup Peninsula north-south infrastructure corridor with the Wong -Goo-Tt-Oo-Group	O'Connor, R
20026	Ethnographic survey and S18 consultation under the Aboriginal Heritage Act (1972) of proposed east-west & north-south infrastructure corridors on the Burrup Peninsula Western Australia	Parker, Ronald T
20875	Report on an archaeological salvage programme Burrup East West Services Corridor Burrup Peninsula : volume one	Quartermaine G S
20876	Report on an archaeological salvage programme Burrup East West Services Corridor Burrup Peninsula : volume two	Quartermaine G S
21173	Site identification and section 18 consultation of Burrup Peninsula Development stages 1 and 2 by the Dampier Port Authority	Australian Interaction Consultants
21174	Report of an archaeological survey of the proposed new port entrance, Dampier Public Wharf, stage 1 and 2	Lantzke, Donald
21271	Section 18 application Dampier Port Authority : Lots 314, 336, 565 & part lots 471 (south east portion), 472 (east of service corridor & 475 (northern portion).	Worley Astron
21272	Site Identification and Section 18 Ethnographic Consultation of the Development of Lots 336, 314, 475, 471 & 565 on the Burrup Peninsula by the Dampier Port Authority	Australian Interaction Consultants
21519	Aboriginal Heritage Desk Study : A strategy for displaced heritage material on the Burrup Peninsula Part 1 : Jilley's Creek volume 2 : inventory of registered sites	Coldrick, Bryn
21520	Aboriginal Heritage Desk Study : A strategy for displaced heritage material on the Burrup Peninsula Part 1 : Jilley's Creek volume 1	Coldrick, Bryn
21599	Burrup Peninsula east - west service corridor (Hearson Village Road to Dampier Port Authority) : archaeological report for an application under Section 18, Aboriginal Heritage Act 1972 (WA)	Draper, Neale
21797	Consent to use the land Section 18 Application : MOF Road Widening Burrup Peninsula, Western Australia	Worley Astron
22175	Report of an Ethnographic Survey of the Proposed Pluto LNG Gas Project, Industrial Site A, Burrup Peninsula, WA. Prepared for Australian Cultural Heritage Management	Australian Interaction Consultants
22243	An archaeological survey for the proposed Woodside Pluto LNG Development, Industrial Site B, Burrup Peninsula, WA : September 2006 [CLOSED]	Draper, Neale ; Boone Law, W ; Liebelt, B. ; Czerwinski, P. ; Pemberton, F. ; Mott, D. ; Maland, A



## List of Related Survey Reports

Report ID	Report Title	Report Authors
22276	Report of an ethnographic survey of the proposed Woodside Pluto LNG development, Industrial Site B, Burrup Peninsula, Western Australia.	Australian Interaction Consultants
22289	Woodside Energy Ltd - Notice under Section 18 of the Aboriginal Heritage Act 1972	Woodside Energy
22290	Woodside Pluto Project S18 Application, Burrup Industrial Site B: Indigenous Heritage Consolidation Report	Draper, Neale
22362	Supplement to : Report of an ethnographic survey of the proposed Woodside Pluto LNG development, Industrial Site B, Burrup Peninsula, Western Australia.	Australian Interaction Consultants
22421	Woodside Energy Limited North West Shelf Joint Venture Aboriginal Sites Audit	Draper, Neale
22883	Report on An Ethnographic and Archaeological Site Identification Survey and Section 18 Consultation of Karratha Sand and Loam Tenements M47/112, M47/326, M47/29 and M47/169 Near Karratha, Western Australia	Australian Interaction Consultants
23659	Report on an Aboriginal Heritage survey of the proposed Burrup Peninsula Services Corridor carried out by the Wong-Goo-Tt-Oo Group	O'Connor, R
23909	Ethnographic and Archaeological Site Identification Survey Report of the Main Roads WA Dampier Highway Duplication and Burrup Peninsula Intersection Upgrade near Dampier, Western Australia	Lafrentz, Damien
23947	The Report of an Aboriginal Heritage Survey of the Proposed Nickol Bay Quarry Western Extension Area, M47/333, Burrup Peninsula, West Pilbara Region, Western Australia :	Anthropos Australis
27727	The Report of an Aboriginal Heritage Survey of the proposed Nickol Bay Quarry Eastern Extension Area, M47/255, M47/306, M47/309, M47/331, M47/353, Burrup Peninsula, West Pilbara Region, WA	Anthropos Australis Pty Ltd
27728	The Report of an Aboriginal Heritage Survey of the proposed Nickol Bay Quarry Eastern Extension Area, M47/255, M47/306, M47/309, M47/331, M47/353, Burrup Peninsula, West Pilbara Region, WA	Anthropos Australis Pty Ltd
28001	Report on an Aboriginal Heritage Survey of Dampier Highway / Burrup Road Intersection Project with Wong-Goo-Tt-Oo Group	R & E O'Connor Pty Ltd
28136	Report on an Ethnographic Survey of Site D, Burrup Peninsula	R & E O'Connor Pty Ltd
28137	Aboriginal Site Identification and Verification Report of the Proposed Burrup Nitrates Technical Ammonium Nitrate Production Facility at Burrup Industrial Estate Site D, Western Australia	Fordyce, Ben
28276	The Report of an Aboriginal Heritage Survey, Aboriginal Site Recording, Cultural Significance Assessment and Consultation Under Section 18 of the Aboriginal Heritage Act 1972, of the Proposed Burrup Nitrates Technical Ammonium Nitrate Project Area, B	Anthropos Australis Pty Ltd
28277	The Report of an Archaeological Site Identification Survey of Burrup Nitrates Proposed Technical Ammonium Nitrate Production Facility at Burrup Industrial Estate Site D, Western Australia	Chisholm, Scott B



## Aboriginal Heritage Inquiry System

### List of Related Survey Reports

Report ID	Report Title	Report Authors
28626	Aboriginal Heritage Surveys of Proposed Two Mile Access Road Relocation Project Burrup Peninsula	R & E O'Connor Pty Ltd
28627	Wong - Goo - Tt - Oo Heritage Survey of Proposed Dampier Highway Duplication Option 3	R & E O'Connor Pty Ltd
28629	Ethnographic and Archaeological Site Identification Survey Report of Main Roads WA Dampier Highway Duplication and Burrup Peninsula Intersection Upgrade near Dampier, Western Australia	Lafrentz, Damien
102046	Report on Archaeological Sites Located by the Cultural Monitoring Programme during the Construction Phase of the Burrup Pipeline Project. May 1998.	Lantzke, D
104342	Report to inform a section 18 application under the Aboriginal Heritage Act (1972) for the destruction, or salvage, of sites contained within a service corridor on the Burrup Peninsula	Parker, Ronald T
104575	Report on an inspection of previously recorded Aboriginal sites in the Burrup West Sevice Corridor	O'Connor, R
106465	Report on an Aboriginal heritage inspection of a proposed quarry extension, haul road expansion and southern lay-down area	O'Connor, R
106488	Quarry Extension Areas, NWSV Trunkline System Expansion Project. Archaeological Report for an Appliction under Section 18, Aboriginal Heritage Act 1972 (WA) Project NWSV Trunkline System Expansion Project Dampier, Western Australia	Draper, Neale
106641	Burrup Peninsula north - south service corridor archaeological report for an application under section 18, Aboriginal Heritage Act 1972 (WA)	Draper, Neale
106644	S18 consultation under the Aboriginal Heritage Act (1972) of proposed north-south & east-west infrastrucre corridors on the Burrup Peninsula Western Australia	Parker, Ronald T
106774	Burrup Peninsula north - south service corridor archaeological report for an application under Section 18 Aboriginal Heritage act 1972 (WA)	Draper, Neale